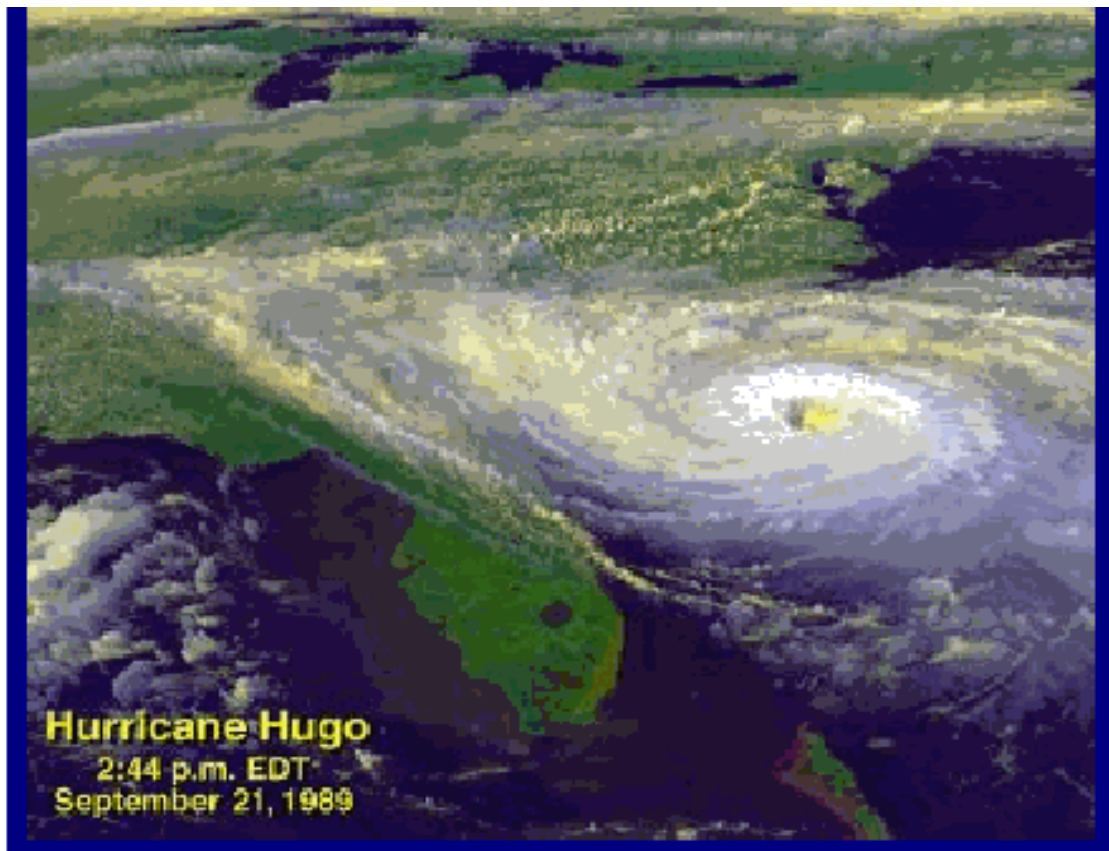


CHARLESTON REGIONAL HAZARD MITIGATION PLAN

2011 to 2012 Edition



**Jurisdictions Represented and Participating in
The Charleston Regional Hazard Mitigation Plan**

Unincorporated Charleston County
Town of Awendaw
City of Charleston
City of Folly Beach
Town of Hollywood
City of Isle of Palms
Town of James Island
Town of Kiawah Island
Town of Lincolnville
Town of McClellanville
Town of Meggett
Town of Mt. Pleasant
City of North Charleston
Town of Ravenel
Town of Rockville
Town of Seabrook Island
Town of Sullivan's Island

Other Government Entities Represented and Participating in this Plan:

Charleston County Parks & Recreation Commission
Charleston County School District
Charleston Water System
College of Charleston
Cooper River Parks & Playground Commission
James Island Public Service District Commission
Mt. Pleasant Water Works Commission
North Charleston District
North Charleston Sewer District
St. Andrews Parish Park & Recreation Commission
St. Andrews Public Service District
St. John's Fire District Commission
St. Paul's Fire District Commission

**CHARLESTON REGIONAL HAZARD MITIGATION PLAN
TABLE OF CONTENTS**

	<i>Preface</i>	Page 4
	<i>List of Abbreviations</i>	Page 5
	<i>Overview of Community Rating System</i>	Page 7
	<i>Overview of Project Impact</i>	Page 8
	<i>Overview of Community Action for a Renewed Environment Program</i>	Page 9
I	Executive Summary	Page 10
II	Planning Process Description	Page 16
III	Hazard Assessment	Page 40
	A. Types of Hazards	Page 41
	B. Hazard Description	Page 42
	C. Discussion	Page 157
IV	Problem Assessment	Page 263
	A. Hazard Vulnerability	Page 264
	B. Infrastructure Vulnerability	Page 287
	C. Known Flood Damages	Page 296
	D. Past flood impacts	Page 298
	E. Emergency warning needs	Page 298
	F. Critical facilities	Page 302
	G. Natural and beneficial functions of floodplains	Page 309
	H. Development and population trends	Page 317
	I. Economic Impact	Page 329
V	Goals	Page 374
VI	Possible Activities	Page 380
	A. Preventive activities	Page 383
	B. Property protection	Page 385
	C. Natural and beneficial functions of floodplains/Resource preservation	Page 388
	D. Emergency services	Page 391
	E. Structural projects	Page 394
	F. Public information activities	Page 397
VII	Adopting Resolution/Action Plan	Page 427
VIII	Appendices	Page 953
	A. Repetitive Loss Property Map	Page 954
	B. Critical Facilities Map	Page 955
	C. South Carolina Climatological Data	Page 956
	D. Definitions of Key Terms/Concepts	Page 957
	E. Hurricane Track Map Charleston County 1851-2004.....	Page 959
	F. Charleston Region Earthquake Location Maps 1996 to 2005.....	Page 960
	G. Charleston Region Maps of Areas with Highest Potential Vulnerability to Wildfire.....	Page 973
	H. Participants in Hazard Mitigation Project Committee/Project Impact.....	Page 974
	I. HAZUS_MH Category 4 Hurricane Simulation Map.....	Page 988
	J. Geologic Map of Charleston Quadrangle.....	Page 989
	K. Summary of Plan Changes.....	Page 990
	L. National Flood Insurance Participation of Government Entities Represented in <i>The Charleston Regional Hazard Mitigation Plan</i>	Page 1008
	M. Plan Approval Letters from SCEMD and FEMA.....	Page 1010
IX	References	Page 1016