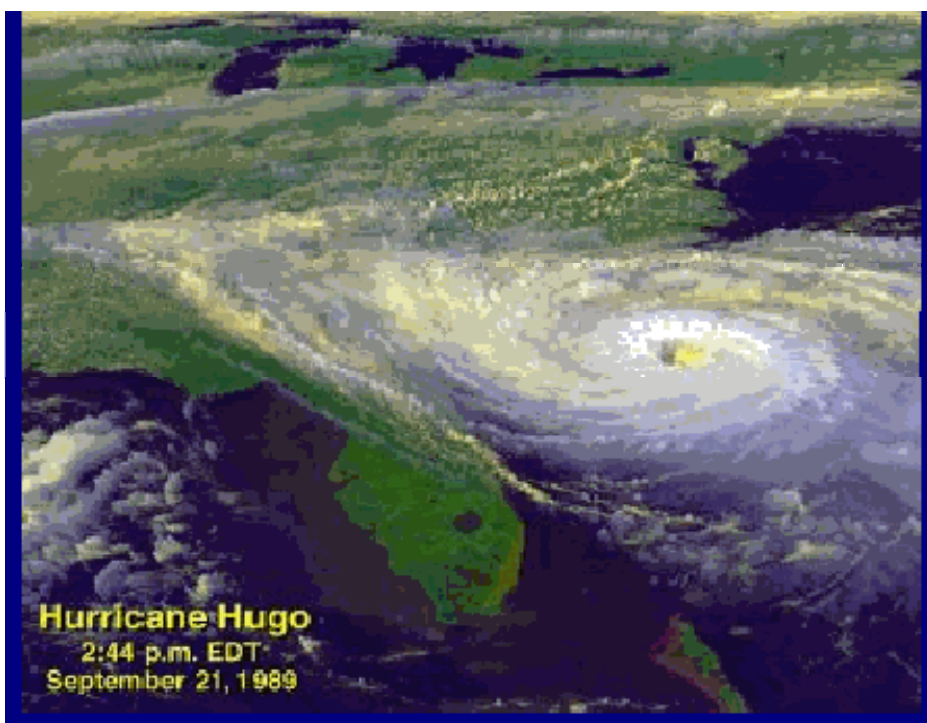


CHARLESTON REGIONAL HAZARD MITIGATION PLAN

2009 to 2010 Edition



**Jurisdictions Represented and Participating in
The Charleston Regional Hazard Mitigation Plan**

Unincorporated Charleston County
Town of Awendaw
City of Charleston
City of Folly Beach
Town of Hollywood
City of Isle of Palms
Town of James Island
Town of Kiawah Island
Town of Lincolnville
Town of McClellanville
Town of Meggett
Town of Mt. Pleasant
City of North Charleston
Town of Ravenel
Town of Rockville
Town of Seabrook Island
Town of Sullivan's Island

Other Government Entities Represented and Participating in this Plan:

Charleston County Parks & Recreation Commission
Charleston County School District
Charleston Water System
College of Charleston
Cooper River Parks & Playground Commission
James Island Public Service District Commission
Mt. Pleasant Water Works Commission
North Charleston District
North Charleston Sewer District
St. Andrews Parish Park & Recreation Commission
St. Andrews Public Service District
St. John's Fire District Commission
St. Paul's Fire District Commission

**CHARLESTON REGIONAL HAZARD MITIGATION PLAN
TABLE OF CONTENTS**

<i>Preface</i>	Page 4
<i>List of Abbreviations</i>	Page 5
<i>Overview of Community Rating System</i>	Page 7
<i>Overview of Project Impact</i>	Page 8
<i>Overview of Community Action for a Renewed Environment Program</i>	Page 9
I Executive Summary	Page 10
II Planning Process Description	Page 16
III Hazard Assessment	Page 40
A. Types of Hazards	Page 41
B. Hazard Description	Page 42
C. Discussion	Page 125
IV Problem Assessment	Page 195
A. Hazard Vulnerability	Page 196
B. Infrastructure Vulnerability	Page 219
C. Known Flood Damages	Page 228
D. Past flood impacts	Page 230
E. Emergency warning needs	Page 230
F. Critical facilities	Page 233
G. Natural and beneficial functions of floodplains	Page 240
H. Development and population trends	Page 248
I. Economic Impact	Page 260
V Goals	Page 301
VI Possible Activities	Page 307
A. Preventive activities	Page 310
B. Property protection	Page 312
C. Natural and beneficial functions of floodplains/Resource preservation	Page 315
D. Emergency services	Page 318
E. Structural projects	Page 321
F. Public information activities	Page 324
VII Adopting Resolution/Action Plan	Page 351
VIII Appendices	Page 804
A. Repetitive Loss Property Map	Page 805
B. Critical Facilities Map	Page 806
C. South Carolina Climatological Data	Page 807
D. Definitions of Key Terms/Concepts	Page 808
E. Hurricane Track Map Charleston County 1851-2004	Page 810
F. Charleston Region Earthquake Location Maps 1996 to 2005	Page 811
G. Charleston Region Maps of Areas with Highest Potential Vulnerability to Wildfire	Page 824
H. Participants in Hazard Mitigation Project Committee/Project Impact.....	Page 825
I. HAZUS_MH Category 4 Hurricane Simulation Map.....	Page 838
J. Geologic Map of Charleston Quadrangle.....	Page 839
K. Summary of Plan Changes.....	Page 840
L. National Flood Insurance Participation of Government Entities Represented in <i>The Charleston Regional Hazard Mitigation Plan</i>	Page 852
M. Plan Approval Letters from SCEMD and FEMA.....	Page 854
IX References	Page 860