

Charleston County

Hurricane Preparedness Guide



Are **YOU** Ready?

www.charlestoncounty.org



Hurricanes Defined

Tropical Storm:

Once winds within a tropical system reach 39 miles per hour and the distinct low pressure area is well defined by a rotating circulation, the system is considered a tropical storm and is given a name.

Hurricane:

A hurricane has sustained winds exceeding 74 miles per hour or greater, dangerously high water and rough seas.

Hurricane Watch:

A hurricane watch is issued when hurricane conditions are a real possibility for an area within 48 hours.

Hurricane Warning:

A hurricane warning is issued when a hurricane is expected within 36 hours. Begin precautionary action at once.

Emergency Operations Center (EOC):

Charleston County's EOC is located in the Lonnie Hamilton, III Public Services Building; 4045 Bridge View Drive; North Charleston, SC 29405.

When the EOC is activated, Charleston County decision-makers coordinate information and implement the County's Emergency Operations Plan during any type of disaster. This plan is reviewed and updated every January to ensure proper readiness and response procedures.

Once it is activated, the EOC is directed by the County Administrator, and is staffed by personnel from a variety of departments. If a storm increases in severity, outside agencies will send representatives to the EOC, so that information can be coordinated and shared among first responders from a single location. Some of these agencies/representatives include:

- Local law enforcement and fire
- Military personnel
- American Red Cross
- Department of Social Services
- Transportation services
- Public works and engineering services
- Hazardous Materials staff
- Telecommunications and power companies
- Coroner
- Damage assessment teams
- Special medical needs services



Operating Conditions (OPCON) of the Emergency Operations Center

OPCON 5

Day-to-day operations to include normal training and exercises



OPCON 4

Possibility of an emergency or disaster situation that may require a partial or full activation of the Charleston County Emergency Operations Center.



OPCON 3

Disaster or emergency situation likely or imminent. Full or partial activation of the Charleston County Emergency Operations Center; activate Charleston County Emergency Operations Plan.



OPCON 2

Disaster or emergency situation in effect; maximum preparedness level; full activation of the Charleston County Emergency Operations Center.



OPCON 1

Disaster or emergency situation in effect; full-fledged emergency response operations on-going; highest state of emergency operations.



Citizen's Info Line

(DURING EMERGENCY OPERATIONS CENTER ACTIVATION ONLY)

(843) 202 – 7100

TTY (843) 202 - 7190
Spanish (843) 202 - 7191

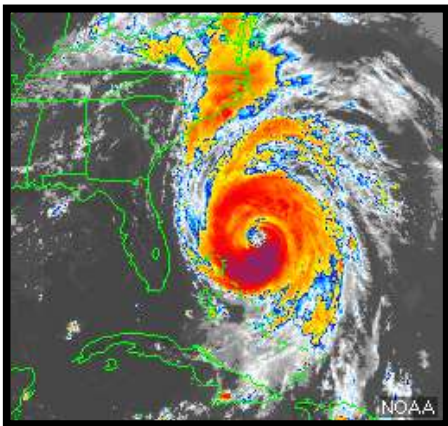
www.charlestoncounty.org



Before the Storm

Check into flood insurance.

You can find out about the National Flood Insurance Program through your home insurance agent. There is normally a 30-day waiting period before a new flood insurance policy becomes effective for an existing residence. Homeowner policies do not cover damage from the flooding that accompanies a hurricane.



Develop an emergency communication plan.

In case family members are separated from one another during a disaster (a real possibility during the day when adults are at work and children are at school), create a plan for getting back together.

Ask an out-of-state relative or friend to serve as the "family contact." After a disaster, it's often easier to call long distance. Make sure everyone in the family knows the name, address, phone number and e-mail address of the contact person.

Make sure that all family members know how to respond after a hurricane.

Teach family members how and when to turn off gas, electricity and water. Teach children how and when to call 9-1-1, police, or the fire department, and which radio station to listen to for emergency information.

Create an Emergency Supplies Kit.

Because deployment of relief supplies and support to affected communities can be delayed or prevented due to damaged or impassable bridges and roads, **assistance from emergency services may not be available for up to 72 hours, or longer, following a major natural disaster.**

Prepare your home.

Once a tornado, hurricane or major storm hits, it's too late to protect your home and property, but there are preparations you can make in advance to limit future wind and flood damage. Some are fairly simple and inexpensive; others will require a contractor. You'll need to consider the characteristics of your home, your financial resources and the building codes in your community.



Emergency Kit

Prepare yourself and your family for a minimum of three days.

Because deployment of relief supplies and support to storm-stricken communities can be delayed or prevented due to damaged or impassable bridges and roads, **assistance from emergency services may not be available for up to 72 hours, or longer, following a major natural disaster.**

Keep informed.

Charleston County Emergency Management works with local, state and national weather officials and the media to keep residents informed of the best ways to prepare or respond during a disaster situation. The purchase of a Weather Alert Radio for your home and place of employment can help you stay informed of changing conditions.

Storing your kit.

Choose a location to store your kit where it is cool and dark, such as a closet or "safety corner" in the garage. If you live in an apartment or have limited space, be innovative. Other possible storage locations include under the bed, under stairways or even a large box or plastic tub that can be covered with a table cloth and used as an end table.



Layer and monitor supplies.

Layer supplies and keep them together in a container such as a plastic garbage can with wheels. Check the items every six months for expiration dates, changes in your children's clothing sizes and weather requirements. A good way to remember to inspect your kit is to do it each time you set clocks back and change your smoke detector batteries.

Use what you have.

Start with what you already have and prepare as if you are going camping for three days with no facilities. If you're a camper you've got a head start because camping supplies, tents, camp stoves and water jugs can double as emergency supplies.



Emergency Kit – Food

Use canned foods for easy storage and long shelf life. However, be aware that they must be changed out at least annually. Choose ready-to-eat canned meat, fruits and vegetables that your family likes.

If the electricity goes off:

- FIRST, use perishable food and foods from the refrigerator.
- THEN, use the foods from the freezer. To minimize the number of times you open the freezer door, post a list of freezer contents on the front. In a well-filled, well-insulated freezer, foods will usually still have ice crystals in their centers, meaning foods are safe to eat, for at least three days.
- FINALLY, begin to use non-perishable foods and staples.

Your Kit should include:

- Ready-to-eat canned meats, fruits and vegetables
- Canned juices, milk, soup (if powdered, store extra water)
- Staples - sugar, salt, pepper
- High energy foods - peanut butter, jelly, crackers, granola bars, trail mix
- Foods and supplements for infants, elderly persons or persons on special diets
- Vitamins
- “Comfort foods” - cookies, hard candy, sweetened cereals, lollipops, instant coffee, tea bags
- Don’t forget food for your pets. Store canned or dry pet food along with an extra collar and leash. Make special arrangements for your pet or seek a hotel/motel that allows pets during emergencies. As a last resort, pets are only allowed in the designated animal emergency shelter at the North Charleston Coliseum (only one person per pet is allowed to stay).
- Store foods in single or family meal-size packaging. Unrefrigerated leftovers can cause food poisoning.
- Add a manual can opener, and cooking and eating utensils.



Emergency Kit – Water

Store a **three-day supply, or more**, of water for your family. **One gallon per person per day** is recommended for drinking, cooking and washing. Remember to include water for pets. Date your water containers and replace them every six months.

Tips for storing and using water:

- Purify water by boiling it for 5 to 10 minutes or by adding drops of *unscented* household bleach containing 5.25 percent hypochlorite. The Federal Emergency Management Association (FEMA) recommends 16 drops of bleach per one gallon of water. Purification tablets or a filter system designed for backpackers also work well.
- Store water in plastic three-liter soda bottles instead of plastic milk-type jugs. Milk jugs will break down over time, and soda bottles last considerably longer. You can also freeze water, and it will last until needed. This frozen water also can be used for non-emergency situations such as camping, fishing, hunting, etc. However, don't forget to replace the water jugs when you get home.
- Learn how to remove water from your hot water heater in case you need it. Be sure to turn off the gas or electricity before draining water for emergency use.



Planning for Your Pet

Basic items for 3 days or longer:

- Water (Dog: 1 gallon for every 10 lbs your dog weighs; Cat: ½ gallon per day)
- Dry food (1-2 lbs food for every 10 lbs the pet weighs per day)
- Food and water bowls
- Vaccination records and medicines
- Collar ID and leash
- Kennel or crate
- Newspaper or litter
- Photo of your pet
- Garbage bag



Emergency Kit

– Tools and Supplies

HOUSEHOLD ITEMS

- Paper goods, plates, cups, plastic utensils
- Map of area to find shelters or distribution points (street sign may be gone)
- Cash or travelers checks and change
- Battery-powered radio with extra batteries
- Flashlights with extra batteries
- Battery-powered clock with extra batteries
- First Aid Kit
- Fire extinguisher, small ABC type
- Duct tape
- Waterproofed matches
- Sewing kit
- Plastic storage containers
- Paper, pencils and pens
- Aluminum foil
- Plastic sheeting or tarps
- Basic tool kit (adjustable wrench, screw drivers, hammer, etc.)

CLOTHING AND BEDDING

- Sturdy shoes or work boots
- Rain gear
- Blankets or sleeping bags
- Hat and work gloves
- Thermal underwear
- Sunglasses

FOR BABY

- Diapers
- Formula
- Bottles
- Powdered milk
- Medications

FOR ADULTS

- All prescription medications
- Insulin if needed
- Denture needs
- Contact lenses and supplies
- Extra eye glasses

FIRST AID KIT

- Sterile adhesive bandages in assorted sizes
- 2-inch sterile gauze pads (4-6)

SANITATION

- Toilet paper, towelettes
- Soap, liquid detergent
- Feminine supplies
- Personal hygiene items
- Plastic garbage bags with ties
- Plastic bucket with tight lid
- Disinfectant
- Unscented household bleach
- Insect repellent

SPECIAL ITEMS

- Entertainment - books, toys and games
- Important family documents to keep in a waterproof container:
 - Family records (birth, marriage, death certificates)
 - Wills
 - Insurance policies
 - Contracts
 - Deeds
 - Stocks and bonds
 - Passports
 - Social Security cards
 - Immunization records
 - Bank account numbers
 - Credit card account numbers/company
 - Inventory of valuable household items

- 4-inch sterile gauze pads (4-6)
- Hypoallergenic adhesive tape
- Triangular bandages (3)
- 2-inch sterile roller bandages (3 rolls)
- 3-inch sterile roller bandages (3 rolls)
- Scissors
- Tweezers
- Needles
- Assorted sizes of safety pins
- Moistened towelettes
- Antiseptic
- Thermometer
- Tongue blades (2)
- Tube of petroleum jelly or other lubricant
- Soap
- Latex gloves (2 pairs)
- Sunscreen

Non-prescription drugs

Aspirin or non-aspirin pain reliever

Anti-diarrhea medication

- Antacid (for stomach upset)
- Syrup of Ipecac (use to induce vomiting if advised by the Poison Control Center)
- Laxative
- Activated charcoal (use if advised by the Poison Control Center)



Prepare Your Home

This homeowner's checklist will help you learn what you can do in advance to protect your home from wind and flood damage. For more information about the costs and benefits of each approach, talk to a professional builder, architect or contractor. You should also ask the County Building Services Department (843-202-6930) about building permit requirements.



Is the roof sheathing properly installed?

During a hurricane, wind forces are carried from the roof down to the exterior walls, down to the foundation. Homes can be damaged when wind forces are not properly transferred to the ground.

Roof sheathing (the boards or plywood nailed to the roof rafters or trusses) can fail during a hurricane if not properly installed. Examine the sheathing from the attic. If many of the nails have missed the rafters, you may need to re-nail the sheathing. If you're putting on a new roof, make sure the sheathing complies with current recommended practices.

Are end gables securely fastened to the rest of the roof?

In a hurricane or other windstorm, the side walls of the roof (end gables) take a beating and can collapse. Gable bracing often consists of 2x4-inch boards placed in an "X" pattern at both ends of the attic – from the top center of the end gable to the bottom of the brace of the fourth truss, and from the bottom center of the end gable to the peak of the roof.

Is the roof fastened to the walls with hurricane straps?

Hurricane straps (made of galvanized metal) help keep the roof fastened to the walls in high winds. They can be difficult to install, so you may need a contractor for this project. Ask the County Building Services Department whether hurricane straps are required or advisable in your area.

Are double entry doors secured at the top and bottom?

The exterior walls, doors and windows are the protective shell of your home. If the shell is broken during a storm, high winds can enter the home and put pressure on the roof and walls, causing serious damage.

For each double door, at least one of the doors should be secured at both the top of the door frame and the floor with sturdy sliding bolts. Most bolts that come with double doors, however, are not strong enough to withstand high winds. Your local hardware store can help you select the proper bolts. Some door manufacturers provide reinforcing bolt kits made specifically for their doors.

Has the garage door been properly secured?

If the garage door fails, winds can enter your home and blow out doors, windows, walls and the roof. Ask the County Building Services Department for guidance on securing a garage door.

Are windows protected by storm shutters?

Installing storm shutters is one of the most effective ways to protect your home. Purchase or make shutters for all exposed windows, French doors, sliding glass doors and skylights. There are many types of manufactured storm shutters available made of wood, aluminum or steel. You can also make storm shutters with 5/8-inch-thick, exterior-grade plywood.



Is the main electric panel board located above potential flood waters?

The main electric panel board (electric fuses or circuit breakers) should be at least 12 inches above the projected flood elevation for your home. The panel board height is regulated by code. All electrical work should be done by a licensed electrician.

Are electric outlets and switches located above potential flood waters?

Consider elevating all electric outlets, switches, light sockets, baseboard heaters and wiring at least 12 inches above the projected flood elevation for your home. You may also want to elevate electric service lines (at the point they enter your home) at least 12 inches above the projected flood elevation. In areas that could get wet, connect all receptacles to a ground fault interrupter (GFI) circuit to avoid the risk of electric shock. Have electrical wiring done by a licensed electrician.

Are the washer, dryer, furnace and water heater above potential flood waters?

They can be placed on masonry blocks or concrete at least 12 inches above the projected flood elevation, moved to inside a floodwall or moved to a higher floor. All work must conform to state and local building codes.



During a Hurricane Watch

A Hurricane Watch is issued when hurricane conditions are a real possibility for an area within 48 hours.

- Review your family disaster plan and check your Emergency Supplies Kit to include food and water supplies.
- Review evacuation plans. Learn safe routes inland and plan your evacuation route. Be ready to drive 20 to 50 miles inland to locate a safe place.
- Make sure the gas tank in your car is full.
- Make arrangements for pets, and identify pet-friendly hotels if you plan to evacuate
- Refill prescription medications.
- Anchor or stow small boats.
- Bring in outdoor objects such as lawn furniture, toys and garden tools; anchor objects that cannot be brought inside.
- Remove outside antennas.
- Secure buildings by closing and boarding up windows.
- Turn refrigerator and freezer to coldest settings. Open only when absolutely necessary and close quickly.
- Store drinking water in jugs, bottles and clean bathtubs.
- Trim dead or weak branches from trees.
- Stay tuned to local media and your Weather Alert Radio for updates on the storm.



During a Hurricane Warning

A Hurricane Warning is issued when a hurricane is expected within 36 hours. Begin precautionary action at once.

- Store valuables such as jewelry, silverware, photos and scrapbooks in a safe place, such as a waterproof container on the highest level of your home.
- Park your car in a sheltered area or on high ground.
- Listen to a battery-operated radio or television for official instructions.
- Evacuate if the order is given.
- If you must stay at home, stay inside away from windows, skylights and glass doors.
- Keep a supply of flashlights and extra batteries. Avoid using open flames, such as candles and kerosene lamps, as a source of light.
- If power is lost, turn off major appliances to reduce power "surge" when electricity is restored.
- If officials order an evacuation:
 - Leave as soon as possible. Avoid flooded roads and watch for washed-out bridges.
 - Secure your home by unplugging appliances and turning off electricity and the main water valve.
 - Tell someone outside of the storm area where you are going.
 - If time permits, and you live in an identified surge zone, elevate furniture to protect it from flooding, or move it to a higher floor.
 - Bring your pre-assembled Emergency Supplies Kit.
 - Bring blankets and sleeping bags if you are going to a shelter.
 - Lock your home and leave.





Evacuation Information

"Move from the water, and brace for the wind"

If you are advised to evacuate your home and move to a safe, temporary location, there are a few things you should remember:

- Follow the instructions and advice of your local government. If you are advised to evacuate, do so promptly. If certain travel routes are specified or recommended, use those routes. Once an order is given you may not be allowed to select your route. **If you plan to leave, leave early.**
- Travel considerations:
 - Before leaving your residence, prepare your family Emergency Supplies Kit (see page 8 for list of supplies) and take it with you in the car.
 - Leave well in advance to avoid being affected by flooding roads, fallen trees or power lines.
 - Make sure the gas tank in your car is full, and listen to the radio as you travel for additional information and instructions from emergency officials.
 - Make sure you have a South Carolina highway map in your vehicle.
 - Evaluate and be prepared to use parallel routes out of the community - this may include smaller roads that run parallel to the interstates and other highways.
 - If you must travel with more than one vehicle, plan to leave early to avoid traffic.
- When an emergency is declared and an evacuation order is announced, designated shelters are opened and operated by the American Red Cross and announced on local radio and television stations.
- While shelters are available in a hurricane situation, there is not enough shelter space in Charleston County for all citizens. Therefore, officials urge citizens to use alternative housing options, such as traveling to a friend's or relative's inland home or to a motel. And remember, even inland shelters and motels may experience loss of electrical power. Take your Emergency Supplies Kit with you.
- A shelter should be considered a last resort to use if you have nowhere else to get out of harms way. Citizens who go to a shelter are asked to bring blankets and pillows, some food for the first day and any necessary medications and supplies. It is highly recommended citizens bring their Emergency Supplies Kit.



Evacuation Routes

When a hurricane threatens South Carolina's coast, you may plan to leave voluntarily or you may be ordered to evacuate. Blue hurricane evacuation route signs are posted along roads to guide you inland to safety.

South Carolina local and state law enforcement officers and the South Carolina Army National Guard will be posted along these routes to assist you. Motorists who wish to deviate from the primary evacuation routes may experience delays or may not be allowed to change routes.

Motorists should be on the lookout for electronic message boards along the evacuation routes and should follow any instructions displayed. These boards may direct motorists to tune in to a local AM radio station to hear route-specific traffic information and other special emergency messages.

Edisto Island and Adams Run

- Take SC 174 to US 17.
- Take US 17 south to SC 64. This will take you to Walterboro, and then to North Augusta.

Yonges Island, Meggett, Hollywood, and Ravenel

- Take SC 165 to US 17, then US 17 south to SC 64.

Johns Island, Kiawah Island and Seabrook Island

- Take SC 700 (Maybank Highway) to Road S-20 (Bohicket Road) to US 17.
- Take US 17 south to SC 64 where you will go to Walterboro, then to North Augusta.

James Island and Folly Beach

- Take SC 171 (Folly Road) to US 17.
- Take US 17 south to I-526 east to the reversed lanes of I-26.



City of Charleston

- The west side of the city (West Ashley) will use SC 61 to US 78, then to Aiken and North Augusta.
- Downtown will use the normal west-bound lanes of I-26.

North Charleston

- Take US 52 (Rivers Avenue) to US 78 to US 178 to Orangeburg, or continue on US 52 to US 176, or continue north on US 52.
- The right lane of US 52 at Goose Creek will continue on to Moncks Corner. In Moncks Corner, it will be directed onto SC 6, where SC 6 will take you toward Columbia.
- The left lane of US 52 at Goose Creek will go on to US 176 to Columbia.
- Evacuees using SC 642 will travel west toward Summerville, and then take Road S-22 (Old Orangeburg Road) to US 78 west.

East Cooper

- *Mount Pleasant:* Take I-526 west or US 17 south to I-26 west.
- *Sullivan's Island:* Take SC 703 to I-526 Business to access I-526 west, and then take I-26 west.
- *Isle of Palms:* Take the Isle of Palms connector (SC 517) to go to US 17 where the right lane will turn north onto US 17. Next, proceed to take SC 41 to SC 402; then to US 52 to SC 375; then to US 521 to SC 261; and then US 378 to Columbia.

Note:

- Evacuees using the left lanes of the Isle of Palms connector will turn left to go to I-526 west and then on to I-26 west.
- Evacuees on I-526 west approaching I-26 from East Cooper will be directed to the normal lanes of I-26 westbound if in the right lane of I-526.
- Those in the left lane of I-526 will be directed into the reversed lanes of I-26.

Awendaw and McClellanville

- Take SC 45 to US 52, where you will be directed to the right onto US 52 to SC 375; then to US 521 to SC 261; and then to US 378 to Columbia.



Red Cross Shelter List

Shelter locations are subject to change. Monitor local media for updates.

If you relocate to a shelter, make sure to bring blankets and pillows, some food for the first day and any necessary medications and sanitary supplies. It is highly recommended that you bring your Emergency Supplies Kit.

Voluntary	Morningside Middle 1999 Singley Lane, North Charleston	Mandatory	Midland Park Primary 2415 Midland Park Road, North Charleston
Voluntary	Northwoods Mid School (old Stall) 7749 Pinehurst St. North Charleston	Reserve	Lambs Elementary 6800 Dorchester Road, North Charleston
Voluntary	Stall High School 3625 Ashley Phosphate Rd, Charleston	Reserve	Ladson Elementary 3321 Ladson Road, Ladson
Voluntary	North Charleston High School 1087 East Montague Avenue, North Charleston	Reserve	Matilda F. Dunstan Elementary 1825 Remount Road, North Charleston
Mandatory	Garrett Academy of Technology 2731 Gordon Street North Charleston	Reserve	Ronald E. McNair Campus 3795 Spruill Avenue, North Charleston
Mandatory	A.C. Corcoran Elementary 8585 Vistavia Road, North Charleston		
Mandatory	Zucker Middle 6401 Dorchester Road, North Charleston	Special Needs	Pinehurst Middle (old Alice Birney) 7750 Pinehurst Street, Charleston
Mandatory	Pepperhill Elementary 3300 Creola Road, North Charleston	Animal Shelter (Only one person per pet allowed)	North Charleston Coliseum 5001 Coliseum Drive, North Charleston



Transportation

If a **mandatory evacuation** is ordered and you do not have transportation, buses will be provided to take you from the following pick-up points to the nearest available shelter. In the event of an emergency, pay attention to local media for possible pick-up location changes.

North Charleston #1 (Lower North Charleston)

Charlestown Academy - 5841 Rivers Avenue
Chelsey Point Center (Ship Watch) - 3655 Rivers Avenue
Military Magnet Academy - 2950 Carner Avenue
School of the Arts - 1600 Saranac Street
Horizon House - 5055 Lackawanna Boulevard
Chicora Elementary School - 1912 Success Street
Mt. Olive Baptist Church - 2416 Meeting Street (Union Heights)
Durant and Rivers Avenue (Old Piggly Wiggly) - 4117 Rivers Avenue
Felix C. Davis Community Center (Park Circle) - 4800 Montague Avenue

North Charleston #2 (Upper North Charleston)

Ladson Elementary School - 3321 Ladson Road (Ladson)
Charleston Korean United Methodist Church - 2745 Shadow Drive (Deer Park)
Kmart Super Center - 8571 Rivers Avenue (Otranto)
Wal-Mart - 7400 Rivers Avenue Unit A
Aviation Square Shopping Center (formerly Sam's Wholesale) - 6185 Rivers Avenue

North Charleston #3 (Dorchester Road Corridor)

Goodwin Elementary School - 5501 Dorchester Road
Lambs Elementary School - 6800 Dorchester Road
Food Lion - 7550 Dorchester Road
Burns Elementary School - 3750 Dorchester Road
Oak Ridge Plaza (old Piggly Wiggly) - 5060 Dorchester Road

Mount Pleasant #1 (Arthur Ravenel Bridge to the Isle of Palms Connector)

Sweet Grass Shopping Center - 1909 Highway 17 North
Bi-Lo - 1440 Ben Sawyer Boulevard
Public Library - 1133 Mathis Ferry Road
Moultrie Middle School (rear side) - 645 Coleman Boulevard
Town Center (Belk) - 1600 Palmetto Grande Drive

Mount Pleasant #2 (North of the Isle of Palms Connector)

Guy C. Lee - 2985 Highway 17 North
Laing Middle School - 2213 Highway 17 North
Jennie Moore Elementary School - 1256 Hamlin Road
Belle Hall Elementary School - 385 Egypt Road
Old Wando High School - 1560 Mathis Ferry Road



Look for this sign designating a pick-up point location near you.

Isle of Palms and Sullivan's Island

Isle of Palms Recreation Center - 24 28th Avenue (Isle of Palms)

Isle of Palms City Hall - 1207 Palm Boulevard (Isle of Palms)

Sullivan's Island Elementary School - 2015 I'on Street (Sullivan's Island)

Awendaw and McClellanville

South Santee Community Center - 710 S. Santee Road off Rutledge Road (South Santee)

McClellanville Middle School - 711 Pinckney Street (McClellanville)

St. James-Santee Elementary School - 8900 Highway 17 North (McClellanville)

Manigault's Store - 7395 Highway 17 North (Awendaw)

Awendaw Grocery - 6435 Highway 17 North at Doar Road (Awendaw)

Seewee Outpost - 4853 Highway 17 North (Awendaw)

Berkeley Co-op - 3745 Highway 17 North and Lieben Road - (Awendaw)

Downtown Charleston

Charleston Progressive School - 382 Meeting Street

Sanders-Clyde Elementary School - 220 Nassau Street

Burke High School - 244 President Street

Joseph Floyd Manor - 2106 Mt. Pleasant Street

Gaillard Municipal Auditorium - 77 Calhoun Street

West Ashley

Bi-Lo - 2863 Bees Ferry Road

West Ashley Middle School (Old Middleton High School) - 1776 Kennerty Drive

Springfield Elementary School - 2741 Clover Street

St. Andrews Middle School (Old St. Andrews High School) - 721 Wappoo Road

Kmart - 1535 Savannah Highway (Highway 17)

Citadel Mall - 2070 Sam Rittenberg Boulevard

Publix Grocery Store - 1401 Sam Rittenberg Boulevard, Charleston

First Assembly of God - 2957 Savannah Highway (Highway 17)

James Island

Earth Fare - 74 Folly Road (South Windermere Shopping Center)

Fast Point Food Store - 1029 Harbor View Road (Harbor View Road at Quail Drive)

Wal-Mart - 1231 Folly Road and Griffith Road

Folly Beach Shopping Center - 1301 Folly Road (Camp Road and Folly Road)

Piggly Wiggly - 1739 Maybank Highway and Folly Road

Bushy/Folly Road - Little Oak Island Drive/McDonough Road and Folly Road

Fort Johnson and Camp Roads

Piggly Wiggly - 1985 Folly Road and Sol Legare Road

Folly Beach

Marsh Winds Condominiums - 2393 Folly Road

Johns Island

Charleston Executive Airport - 2700 Fort Trenholm Road (off River Road)

Mount Zion Elementary School - 3464 River Road

Charleston Collegiate (Sea Island Academy) - 2024 Academy Drive

Stono Market - 3690 Bohicket Road # 3A

Piggly Wiggly - 3575 Maybank Highway (Main Road and Maybank Highway)

St. John's High School - 1518 Main Road

Wadmalaw Island

Frierson Elementary School - 6133 Maybank Highway
New Jerusalem A.M.E. Church - 6179 Bears Bluff Road

Kiawah Island and Seabrook Island

Newton Farm - 149 Village Green Lane (Kiawah Island)

Adam's Run

Adam's Run Civic Center - 5166 Highway 174
LJ's Barber Shop and Convenience Store (B&G Groceries) - 5213 Highway 174
Shilo Baptist Church - 5629 Parkers Ferry Road

Edisto Island

E-Z Stop - 2410 Highway 174
Jane Edwards Elementary School - 1960 Jane Edwards Road
True Value Hardware Store - 487 Highway 174

Hollywood, Ravenel and Yonges Island

Rantowles Baptist Church - 4590 Highway 162 (Hollywood)
Baptist Hill High School - 5117 Baptist Hill Road (Hollywood)
Allen AME Church (Meggett) - 6940 Ethel Post Office Road (Hollywood)
Minnie Hughes Elementary School - 8548 Willtown Road (Hollywood)
Mt. Horr A.M.E. Church - 4360 Highway 174 (Hollywood)
Ravenel Town Hall - 5962 Highway 165, Suite 100 (Ravenel)
CC Blaney Elementary School - 7184 Highway 162 (Yonges Island)

Transportation Notes:

If you have an animal to evacuate with you and you do not have transportation: Contact the Charleston County Emergency Public Information Line at (843) 202-7100, and a vehicle will be dispatched to transport you and your pet(s) to the evacuation animal shelter. Bring all supplies needed for your pet: crate, collar, leash, food, identification, veterinarian/immunization records, etc.

If you are disabled and cannot get to the nearest evacuation pick-up point: Contact the Charleston County Emergency Public Information Line at (843) 202-7100, and a vehicle will be dispatched to transport you to the nearest available shelter.

If you need transportation to the nearest shelter during a voluntary evacuation: Contact the Charleston County Emergency Public Information Line at (843) 202-7100 for assistance. Buses will not be picking up residents at the pick-up points during a voluntary evacuation.

Pay attention to local media for any pick-up location changes.

Special Needs Planning

If you have special needs, the following organizations can help you make a plan and register you for emergency assistance:

- **Medical Needs**

S.C. Department of Health and Environmental Control (DHEC) at (843) 953 - 3800.

- **Mobility & Other Special Needs** Disabilities Resource Center at (843) 225 - 5080.



After the Storm

Stay tuned to local media for information. Return home only after authorities advise that it is safe to do so.

- Enter your home with caution.
- Avoid loose or dangling power lines and report them immediately to the power company, police or fire department.
- Beware of snakes, insects and other animals driven to higher ground, such as inside your home, by flood water.
- Open windows and doors to ventilate and dry your home.
- Check the refrigerator for spoiled foods.
- Take pictures of the damage, both to the house and its contents, for insurance claims.
- Drive only if absolutely necessary and avoid flooded roads and washed-out bridges.
- Use the telephone only for emergency calls.
- Check for gas leaks. If you smell gas or hear a blowing or hissing noise, open a window and quickly leave the building. Turn off the gas at the outside main valve if you can and call the gas company from a neighbor's home. If you turn off the gas for any reason, it must be turned back on by a professional.
- Look for electrical system damage. If you see sparks or broken or frayed wires, or if you smell hot insulation, turn off the electricity at the main fuse box or circuit breaker. If you have to step in water to get to the fuse box or circuit breaker, call an electrician first for advice.
- Check for sewage and water line damage. If you suspect sewage lines are damaged, avoid using the toilets and call a plumber. If water pipes are damaged, contact the water company and avoid using water faucets.



Managing Storm Debris

Do your part to help speed up the recovery process. Proper clean-up procedures can go a long way toward regaining your normal way of life. Separating debris maximizes recycling opportunities and reduces the amount of waste that goes into the landfill.

Regular household garbage should be put in its normal place/container and will be picked up by the regular provider. It should not be sorted into the storm debris piles.

Don't C.H.E.A.T. the environment. Separate your debris into the following categories:



C

Construction debris

Building materials, drywall, lumber, carpet, furniture, mattresses and plumbing



H

Hazardous waste

Oils, batteries, pesticides, paints, cleaning supplies and compressed gas



E

Electronics

Televisions, computers, radios, stereos, DVD players/VCR's and telephones



A

Appliances

Refrigerators, washers/dryers, freezers, air conditioners, stoves, water heaters and dishwashers



T

Trees and vegetation

Tree branches, leaves and logs

CORRECT placement of debris piles:

- Curbside within 15 feet of the road
- Between the street and the sidewalk (if there's a sidewalk)
- Pair up with neighbors and consolidate your waste piles

INCORRECT placement of debris piles:

- On the road
- On the sidewalk
- On or leaning against trees, water/gas meters, telephone poles or power towers



Important Phone Numbers

Charleston County Emergency Management Department	(843) 202 - 7400
Charleston County Building Services (Preparing Your Home and Flood Zone Information)	(843) 202 - 6930
Disabilities Resource Center (Mobility Issues Assistance)	(843) 225 - 5080
S.C. Department of Health and Environmental Control (Medical Needs Assistance)	(843) 953 - 3800
American Red Cross: Carolina Lowcountry Chapter	(843) 764 - 2323
S.C. Department of Transportation (Evacuation Traffic Information)	(888) 877- 9151
Charleston County Emergency Citizen's Information Line (Open <u>only</u> during Emergency Operation Center Activation)	(843) 202 - 7100
Charleston County Emergency Citizen's Information Line - <i>Spanish</i> (Open <u>only</u> during Emergency Operation Center Activation)	(843) 202 - 7191
Charleston County Emergency Citizen's Information Line - <i>TTY</i> (Open <u>only</u> during Emergency Operation Center Activation)	(843) 202 - 7190



Homeland Security

Family Communications Plan

Your family may not be together when disaster strikes, so plan how you will contact one another and review what you will do in different situations.

Out-of-Town Contact Name _____
Email: _____

Telephone Number: _____
Telephone Number: _____

Fill out the following information for each family member and keep it up to date.

Name: _____	Social Security Number: _____
Date of Birth: _____	Important Medical Information: _____
Name: _____	Social Security Number: _____
Date of Birth: _____	Important Medical Information: _____
Name: _____	Social Security Number: _____
Date of Birth: _____	Important Medical Information: _____
Name: _____	Social Security Number: _____
Date of Birth: _____	Important Medical Information: _____
Name: _____	Social Security Number: _____
Date of Birth: _____	Important Medical Information: _____
Name: _____	Social Security Number: _____
Date of Birth: _____	Important Medical Information: _____

Where to go in an emergency. Write down where your family spends the most time: work, school and other places you frequent. Schools, daycare providers, workplaces and apartment buildings should all have site-specific emergency plans.

Home

Address: _____
 Phone Number: _____
 Neighborhood Meeting Place: _____
 Regional Meeting Place: _____

Work

Address: _____
 Phone Number: _____
 Evacuation Location: _____

School

Address: _____
 Phone Number: _____
 Evacuation Location: _____

Work

Address: _____
 Phone Number: _____
 Evacuation Location: _____

School

Address: _____
 Phone Number: _____
 Evacuation Location: _____

Other place you frequent:

Address: _____
 Phone Number: _____
 Evacuation Location: _____

School

Address: _____
 Phone Number: _____
 Evacuation Location: _____

Other place you frequent:

Address: _____
 Phone Number: _____
 Evacuation Location: _____

Important Information	Name	Telephone #	Policy #
Doctor(s):			
Other:			
Pharmacist:			
Medical Insurance:			
Homeowners/Rental Insurance:			
Veterinarian/Kennel (for pets):			

Other useful phone numbers: **9-1-1** for emergencies.

Police Non-Emergency Phone #: _____



How you can help...

Community Emergency Response Team (CERT)



Assist your neighbors during an emergency by applying basic response skills to help save lives!

You will learn:

- Disaster preparedness
- Fire safety
- Disaster medical operations
- Team organization
- Disaster psychology
- Terrorism response
- Light search & rescue

Disaster Animal Response Team (DART)

Assist emergency pet shelter managers with:

- Setting up the animal shelter at the North Charleston Coliseum
- Care and maintenance of pets in the shelter
- Documentation of in-take, care, maintenance and discharge of pets at the shelter



Contact the Charleston County Emergency Management Department at (843) 202-7400 for more information about these programs.



CHARLESTON
COUNTY
SOUTH CAROLINA

4045 Bridge View Drive
North Charleston, SC 29405
Phone: (843) 958- 4000

Produced on June 1, 2011

www.charlestoncounty.org