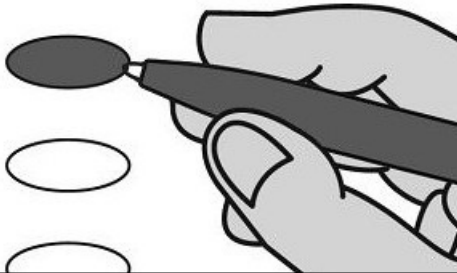


**OFFICIAL BALLOT - CHARLESTON COUNTY, SC
GENERAL ELECTION
NOVEMBER 5, 2019**

**ABSENTEE
ISLE OF PALMS 1A
B 4**

Instructions

Marking Your Ballot



- To vote, darken the oval beside your choice using a blue or black pen. Do not make marks outside the oval.
- Vote for one candidate in each contest unless otherwise indicated.
- You do not have to vote in every contest.
- To change or correct your ballot, request a replacement from the election official.

Write-ins

- To write-in a candidate, darken the oval beside "Write-in" and print the name on the line provided.

City of Isle of Palms

City Council
Vote for up to Four

- Katrina Limbach
- Kevin M Popson
- Phillip Pounds
- Rusty Streetman
- Jimmy Ward

- _____
Write-in
- _____
Write-in
- _____
Write-in
- _____
Write-in

**Water and Sewer
Commissioner**
Vote for up to Two

- Curtis Helfrich
- _____
Write-in
- _____
Write-in

SAMPLE