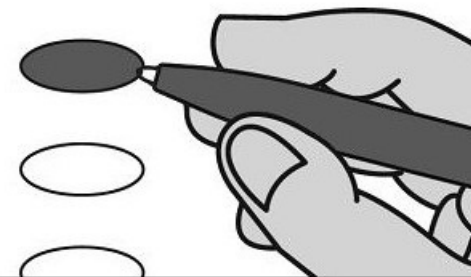


**OFFICIAL BALLOT - CHARLESTON COUNTY, SC
GENERAL ELECTION
NOVEMBER 8, 2022**

**EMERGENCY/
PROVISIONAL
MT. PLEASANT 32
B112**

Instructions

Marking Your Ballot



- To vote, darken the oval beside your choice using a blue or black pen. Do not make marks outside the oval.
- Vote for one candidate in each contest unless otherwise indicated.
- You do not have to vote in every contest.
- To change or correct your ballot, request a replacement from the election official.

Write-ins

- To write-in a candidate, darken the oval beside "Write-in" and print the name on the line provided.

Straight Party Vote

- If you make a straight party selection, you are selecting all candidates of that party on this ballot.
- Any vote cast for an individual candidate will take precedence over your straight party selection.
- Nonpartisan offices and questions are not included in the straight party vote and must be marked individually.

Straight Party

- United Citizens
- Green
- Republican
- Alliance
- Libertarian
- Democratic

**Governor and Lieutenant Governor
Vote for One**

- Henry McMaster
Pamela Evette
Republican
- Bruce Reeves
Jessica Ethridge
Libertarian
- Joe Cunningham
Tally Parham Casey
Democratic

Write-In

**Secretary of State
Vote for One**

- Mark Hammond
Republican
- Rosemounda Peggy Butler
Democratic

Write-In

**State Treasurer
Vote for One**

- Curtis Loftis
Republican
- Sarah E Work
Alliance

Write-In

**Attorney General
Vote for One**

- Alan Wilson
Republican

Write-In

**Comptroller General
Vote for One**

- Richard Eckstrom
Republican

Write-In

**State Superintendent of Education
Vote for One**

- Patricia M Mickel
Green
- Ellen Weaver
Republican
- Lisa Ellis
Alliance
- Lisa Ellis
Democratic

Write-In

**Commissioner of Agriculture
Vote for One**

- Chris Nelums
United Citizens
- David Edmond
Green

- Hugh Weathers
Republican

Write-In

**U.S. Senate
Vote for One**

- Tim Scott
Republican

- Krystle Matthews
Democratic

Write-In

**U.S. House of Representatives
District 1
Vote for One**

- Nancy Mace
Republican

- Joseph Oddo
Alliance

- Annie Andrews
Democratic

Write-In

**State House of Representatives
District 80
Vote for One**

- Kathy Landing
Republican

- Donna Brown Newton
Democratic

Write-In

CONTINUE VOTING ON BACK

Probate Judge
Vote for One

- Irv Condon
Republican
- Tamara Cunningham Curry
Democratic
- _____
Write-In

County Council District 1
Vote for One

- Herb Sass
Republican
- _____
Write-In

Register of Deeds
Vote for One

- Bob McIntyre
Republican
- Karen Lesser Hollings
Democratic
- _____
Write-In

Soil and Water District Commission
Vote for up to Two

- John D Barr
Nonpartisan
- Hal Hanvey
Nonpartisan
- _____
Write-In
- _____
Write-In

School Board of Trustees District 1
Vote for One

- Doyle Costello
Nonpartisan
- Keith S Grybowski
Nonpartisan
- _____
Write-In

Constituent School Board Moultrie District 2 At Large
Vote for One

- Marshelle LaTonya Grant
Nonpartisan
- Mike Lawrie
Nonpartisan
- Jason T P Staker
Nonpartisan
- _____
Write-In

Constituent School Board Mount Pleasant District 2
Vote for One

- Steve Ripley
Nonpartisan
- Mark R Ruppel
Nonpartisan
- Jason T P Staker
Nonpartisan
- _____
Write-In

Statewide Constitutional Amendments

Amendment 1

Must Section 36(A), Article III of the Constitution of this State, relating to the General Reserve Fund, be amended so as to provide that the General Reserve Fund of five percent of general fund revenue of the latest completed fiscal year must be increased each year by one-half of one percent of the general fund revenue of the latest completed fiscal year until it equals seven percent of such revenues?

Explanation

A 'Yes' vote will increase the amount of money state government must keep in the General Reserve Fund (its "rainy day" fund) from 5% of the previous year's revenue to 7% of the previous year's revenue.

- Yes
- No

Amendment 2

Must Section 36(B), Article III of the Constitution of this State be amended so as to provide that the Capital Reserve Fund of two percent of the general fund revenue of the latest completed fiscal year be increased to three percent of the general fund revenue of the latest completed fiscal year and to provide that the first use of the Capital Reserve Fund must be to offset midyear budget reductions?

Explanation

A 'Yes' vote will increase the amount of money state government must appropriate to the Capital Reserve Fund (the "reserve and capital improvements" fund) from 2% of the previous year's revenue to 3% of the previous year's revenue and require that the Capital Reserve Fund's first priority is to offset midyear budget cuts at state agencies.

- Yes
- No

Local Question

Town of Mount Pleasant Referendum

Must a four mill tax, not to exceed a maximum debt issuance of Fifty Million Dollars (\$50,000,000.00), be imposed in Mount Pleasant with the revenue of the tax used to pay, directly or indirectly, the cost of the following public projects as prioritized herein, in the Town of Mount Pleasant:

1. Construction, maintenance and operation of recreation

Local Question

amenities including: rectangular sports fields, a multipurpose facility gymnasium, tennis and pickle ball courts all located at the park land on Rifle Range Road, Town of Mount Pleasant;

2.Acquisition, construction, maintenance and operation of a network or portion of a network of multi-use paths known as the Mount Pleasant Way linking key portions of the Town including recreation facilities, parks and neighborhoods;

3. Park West Pool renovation and maintenance including the demolition and redesign and building of the lobby, locker rooms, and office; and

4.Acquisition of greenspace for land preservation and passive use; and

5. Mugsy Kerr Tennis Complex maintenance, renovation and expansion of the facility.

- Yes, In favor of the question
- No, Opposed to the question