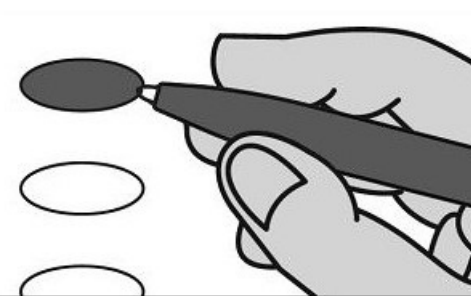


**OFFICIAL BALLOT - CHARLESTON COUNTY, SC  
GENERAL ELECTION  
NOVEMBER 8, 2022**

**EMERGENCY/  
PROVISIONAL  
JAMES ISLAND 11  
B162**

**Instructions**

**Marking Your Ballot**



- To vote, darken the oval beside your choice using a blue or black pen. Do not make marks outside the oval.
- Vote for one candidate in each contest unless otherwise indicated.
- You do not have to vote in every contest.
- To change or correct your ballot, request a replacement from the election official.

**Write-ins**  
• To write-in a candidate, darken the oval beside "Write-in" and print the name on the line provided.

**Straight Party Vote**  
• If you make a straight party selection, you are selecting all candidates of that party on this ballot.  
• Any vote cast for an individual candidate will take precedence over your straight party selection.  
• Nonpartisan offices and questions are not included in the straight party vote and must be marked individually.

**Straight Party**

- United Citizens
- Green
- Republican
- Alliance
- Libertarian
- Democratic

**Governor and Lieutenant Governor  
Vote for One**

- Henry McMaster  
Pamela Evette  
Republican
- Bruce Reeves  
Jessica Ethridge  
Libertarian
- Joe Cunningham  
Tally Parham Casey  
Democratic
- \_\_\_\_\_  
Write-In

**Secretary of State  
Vote for One**

- Mark Hammond  
Republican
- Rosemounda Peggy Butler  
Democratic
- \_\_\_\_\_  
Write-In

**State Treasurer  
Vote for One**

- Curtis Loftis  
Republican
- Sarah E Work  
Alliance
- \_\_\_\_\_  
Write-In

**Attorney General  
Vote for One**

- Alan Wilson  
Republican
- \_\_\_\_\_  
Write-In

**Comptroller General  
Vote for One**

- Richard Eckstrom  
Republican
- \_\_\_\_\_  
Write-In

**State Superintendent of Education  
Vote for One**

- Patricia M Mickel  
Green
- Ellen Weaver  
Republican
- Lisa Ellis  
Alliance
- Lisa Ellis  
Democratic
- \_\_\_\_\_  
Write-In

**Commissioner of Agriculture  
Vote for One**

- Chris Nelums  
United Citizens
- David Edmond  
Green
- Hugh Weathers  
Republican
- \_\_\_\_\_  
Write-In

**U.S. Senate  
Vote for One**

- Tim Scott  
Republican
- Krystle Matthews  
Democratic
- \_\_\_\_\_  
Write-In

**U.S. House of Representatives  
District 1  
Vote for One**

- Nancy Mace  
Republican
- Joseph Oddo  
Alliance
- Annie Andrews  
Democratic
- \_\_\_\_\_  
Write-In

**State House of Representatives  
District 110  
Vote for One**

- Tom Hartnett  
Republican
- Ellis Roberts  
Democratic
- \_\_\_\_\_  
Write-In

**CONTINUE VOTING ON BACK**

**Probate Judge**  
Vote for One

- Irv Condon  
Republican
- Tamara Cunningham Curry  
Democratic
- \_\_\_\_\_  
Write-In

**County Council  
District 9**  
Vote for One

- Jenny Costa Honeycutt  
Republican
- Julie Hallman  
Democratic
- \_\_\_\_\_  
Write-In

**Register of Deeds**  
Vote for One

- Bob McIntyre  
Republican
- Karen Lesser Hollings  
Democratic
- \_\_\_\_\_  
Write-In

**Soil and Water District  
Commission**  
Vote for up to Two

- John D Barr  
Nonpartisan
- Hal Hanvey  
Nonpartisan
- \_\_\_\_\_  
Write-In
- \_\_\_\_\_  
Write-In

**School Board of Trustees  
District 9**  
Vote for One

- Forrest Bjork  
Nonpartisan
- Graham Smith  
Nonpartisan
- Carol Tempel  
Nonpartisan
- \_\_\_\_\_  
Write-In

**Constituent School Board  
James Island  
District 3**  
Vote for up to Three

- Katy Calloway  
Nonpartisan
- Donna S Jenkins  
Nonpartisan
- Cynthia E Smalls  
Nonpartisan
- \_\_\_\_\_  
Write-In
- \_\_\_\_\_  
Write-In
- \_\_\_\_\_  
Write-In

**Statewide Constitutional  
Amendments**

**Amendment 1**

Must Section 36(A), Article III of the Constitution of this State, relating to the General Reserve Fund, be amended so as to provide that the General Reserve Fund of five percent of general fund revenue of the latest completed fiscal year must be increased each year by one-half of one percent of the general fund revenue of the latest completed fiscal year until it equals seven percent of such revenues?

**Explanation**

A 'Yes' vote will increase the amount of money state government must keep in the General Reserve Fund (its "rainy day" fund) from 5% of the previous year's revenue to 7% of the previous year's revenue.

- Yes
- No

**Amendment 2**

Must Section 36(B), Article III of the Constitution of this State be amended so as to provide that the Capital Reserve Fund of two percent of the general fund revenue of the latest completed fiscal year be increased to three percent of the general fund revenue of the latest completed fiscal year and to provide that the first use of the Capital Reserve Fund must be to offset midyear budget reductions?

**Explanation**

A 'Yes' vote will increase the amount of money state government must appropriate to the Capital Reserve Fund (the "reserve and capital improvements" fund) from 2% of the previous year's revenue to 3% of the previous year's revenue and require that the Capital Reserve Fund's first priority is to offset midyear budget cuts at state agencies.

- Yes
- No