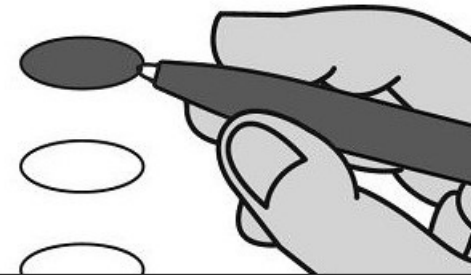


**OFFICIAL BALLOT - CHARLESTON COUNTY, SC
GENERAL ELECTION
NOVEMBER 8, 2022**

**EMERGENCY/
PROVISIONAL
SEABROOK
B031**

Instructions

Marking Your Ballot



- To vote, darken the oval beside your choice using a blue or black pen. Do not make marks outside the oval.
- Vote for one candidate in each contest unless otherwise indicated.
- You do not have to vote in every contest.
- To change or correct your ballot, request a replacement from the election official.

Write-ins

- To write-in a candidate, darken the oval beside "Write-in" and print the name on the line provided.

Straight Party Vote

- If you make a straight party selection, you are selecting all candidates of that party on this ballot.
- Any vote cast for an individual candidate will take precedence over your straight party selection.
- Nonpartisan offices and questions are not included in the straight party vote and must be marked individually.

Straight Party

- United Citizens
- Green
- Republican
- Alliance
- Libertarian
- Democratic

**Governor and Lieutenant Governor
Vote for One**

- Henry McMaster
Pamela Evette
Republican
- Bruce Reeves
Jessica Ethridge
Libertarian
- Joe Cunningham
Tally Parham Casey
Democratic

Write-In

**Secretary of State
Vote for One**

- Mark Hammond
Republican
- Rosemounda Peggy Butler
Democratic

Write-In

**State Treasurer
Vote for One**

- Curtis Loftis
Republican
- Sarah E Work
Alliance

Write-In

**Attorney General
Vote for One**

- Alan Wilson
Republican

Write-In

**Comptroller General
Vote for One**

- Richard Eckstrom
Republican

Write-In

**State Superintendent of Education
Vote for One**

- Patricia M Mickel
Green
- Ellen Weaver
Republican
- Lisa Ellis
Alliance
- Lisa Ellis
Democratic

Write-In

**Commissioner of Agriculture
Vote for One**

- Chris Nelums
United Citizens
- David Edmond
Green

- Hugh Weathers
Republican

Write-In

**U.S. Senate
Vote for One**

- Tim Scott
Republican

- Krystle Matthews
Democratic

Write-In

**U.S. House of Representatives
District 1
Vote for One**

- Nancy Mace
Republican

- Joseph Oddo
Alliance

- Annie Andrews
Democratic

Write-In

**State House of Representatives
District 115
Vote for One**

- Carroll O'Neal
Republican

- Spencer Wetmore
Democratic

Write-In

CONTINUE VOTING ON BACK

Probate Judge
Vote for One

- Irv Condon
Republican
- Tamara Cunningham Curry
Democratic
- _____
Write-In

**County Council
District 9**
Vote for One

- Jenny Costa Honeycutt
Republican
- Julie Hallman
Democratic
- _____
Write-In

Register of Deeds
Vote for One

- Bob McIntyre
Republican
- Karen Lesser Hollings
Democratic
- _____
Write-In

**Soil and Water District
Commission**
Vote for up to Two

- John D Barr
Nonpartisan
- Hal Hanvey
Nonpartisan
- _____
Write-In
- _____
Write-In

**School Board of Trustees
District 9**
Vote for One

- Forrest Bjork
Nonpartisan
- Graham Smith
Nonpartisan
- Carol Tempel
Nonpartisan
- _____
Write-In

**Constituent School Board
St Johns
District 9**
Vote for up to Four

- Jeff Fine
Nonpartisan
- Karen Simmons
Nonpartisan
- Monica A Smith
Nonpartisan
- Jennifer Young
Nonpartisan
- _____
Write-In
- _____
Write-In
- _____
Write-In
- _____
Write-In

**Statewide Constitutional
Amendments**

Amendment 1

Must Section 36(A), Article III of the Constitution of this State, relating to the General Reserve Fund, be amended so as to provide that the General Reserve Fund of five percent of general fund revenue of the latest completed fiscal year must be increased each year by one-half of one percent of the general fund revenue of the latest completed fiscal year until it equals seven percent of such revenues?

Explanation

A 'Yes' vote will increase the amount of money state government must keep in the General Reserve Fund (its "rainy day" fund) from 5% of the previous year's revenue to 7% of the previous year's revenue.

- Yes
- No

Amendment 2

Must Section 36(B), Article III of the Constitution of this State be amended so as to provide that the Capital Reserve Fund of two percent of the general fund revenue of the latest completed fiscal year be increased to three percent of the general fund revenue of the latest completed fiscal year and to provide that the first use of the Capital Reserve Fund must be to offset midyear budget reductions?

Explanation

A 'Yes' vote will increase the amount of money state government must appropriate to the Capital Reserve Fund (the "reserve and capital improvements" fund) from 2% of the previous year's revenue to 3% of the previous year's revenue and require that the Capital Reserve Fund's first priority is to offset midyear budget cuts at state agencies.

- Yes
- No

