




Your input matters!

 ACRinfo@charlestoncounty.org

 ACR.charlestoncounty.org

 843-202-6140

AIRPORT CONNECTOR ROAD

Public Information Meeting

Wednesday, June 18, 2014

6:00 PM - 8:00 PM

Jerry Zucker Middle School

6401 Dorchester Road



PROJECT
PURPOSE +
GOALS

IMPROVE

area traffic flow

ENHANCE

regional connectivity

PROMOTE

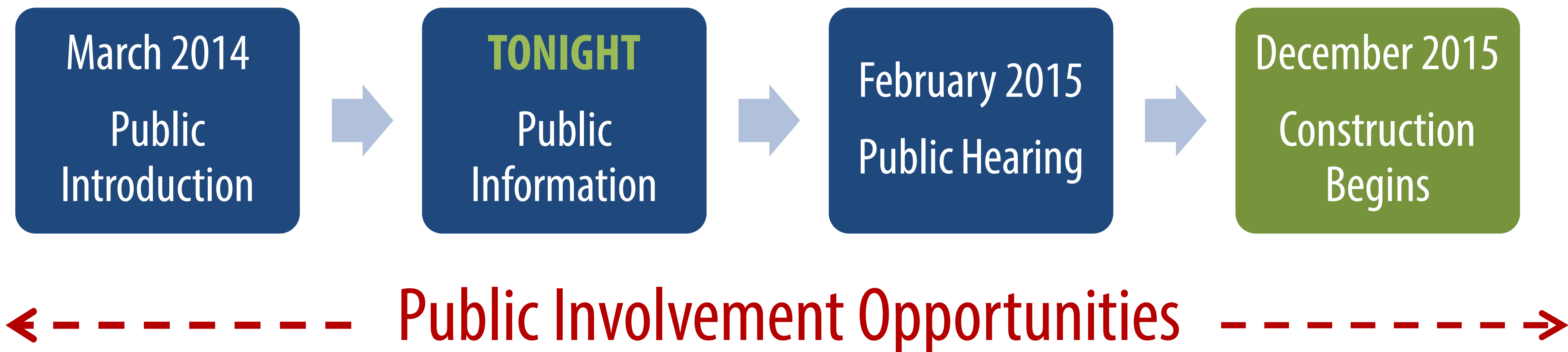
economic development

SUPPORT

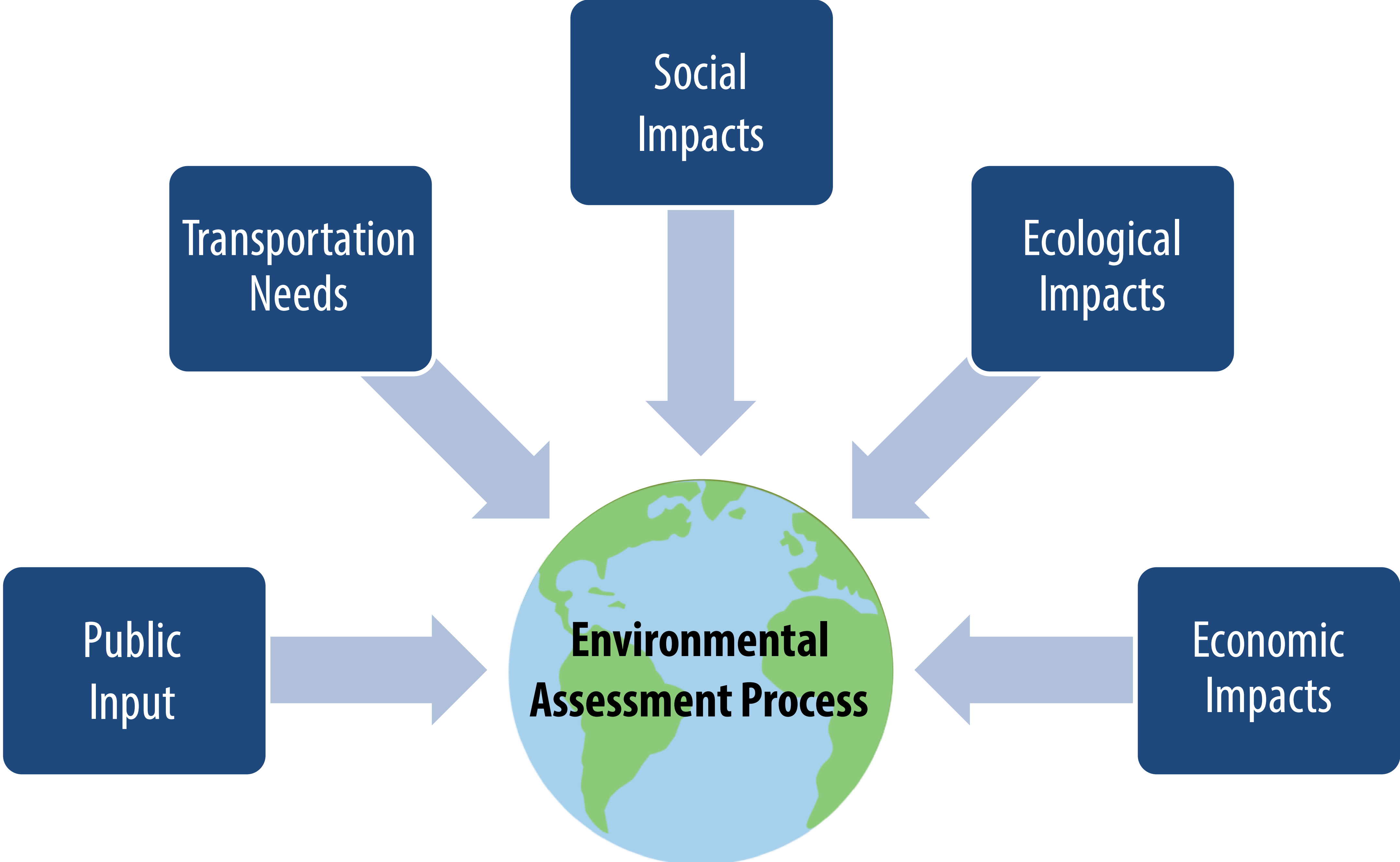
other existing road projects

PROJECT SCHEDULE

Activity	Start	Finish	2013	2014					2015				2016				2017			
			Q4	Q1	Q2	Q3	Q4	Q1	Q2	Q3	Q4	Q1	Q2	Q3	Q4	Q1	Q2	Q3	Q4	
Preliminary Plans	29-Oct-13	10-Oct-14	█		█		█													
Utility Coordination	29-Oct-13	17-Dec-15	█		█		█		█		█									
ROW Plans	10-Oct-14	28-Jan-15					█													
ROW / Permits	28-Jan-15	2-Oct-15							█		█									
Final Construction Plans	12-Mar-15	4-Sep-15							█		█									
Advertise for Bid	10-Jun-15	17-Dec-15									█									
Construction	17-Dec-15	15-Jun-17											█							

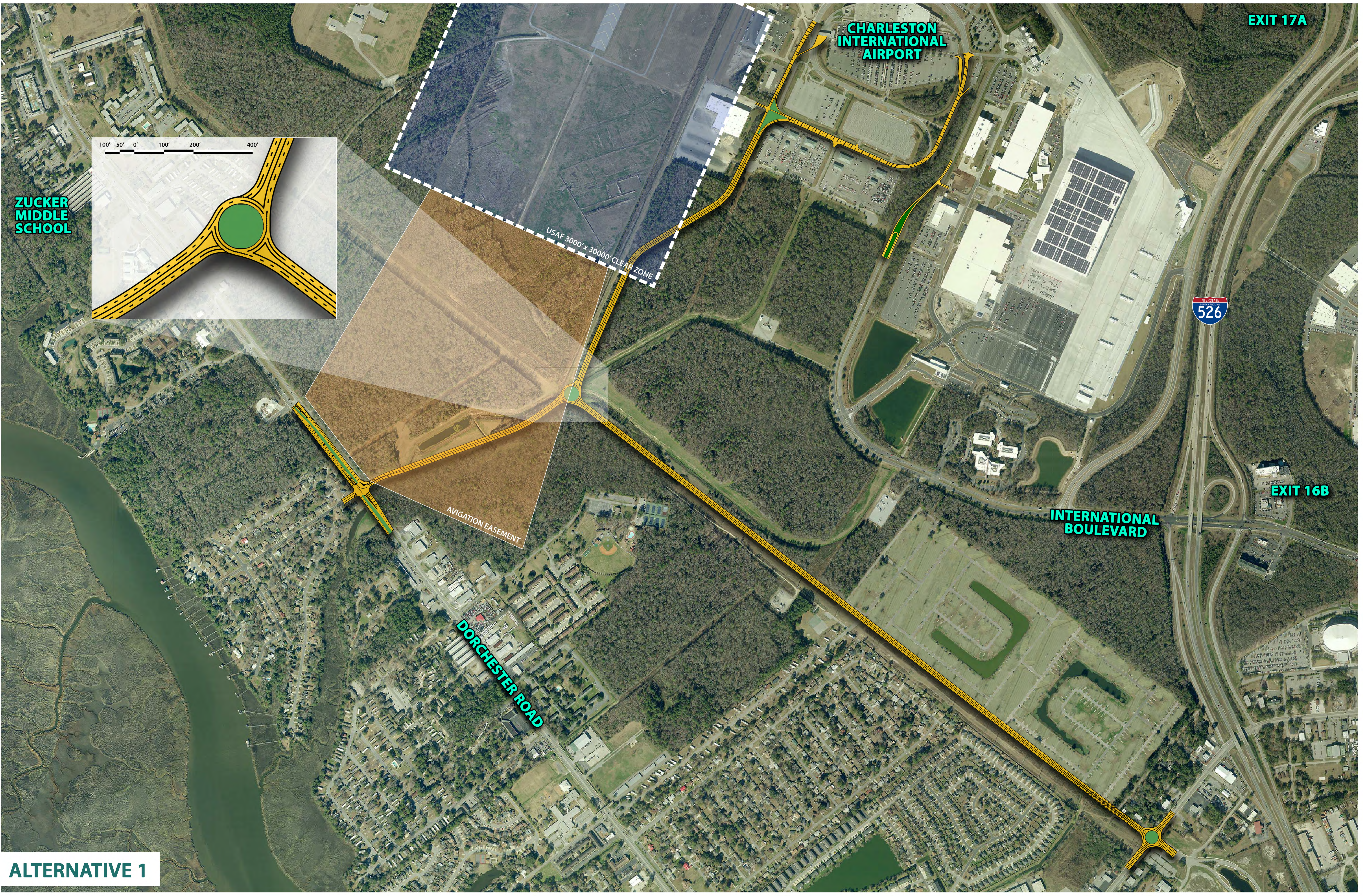


ENVIRONMENTAL REVIEW



- Air Quality
- Biotic Resources
- Coastal Resources
- Endangered & Threatened Species
- Natural Resources
- Farmland
- Wetlands
- Wild and Scenic Rivers
- Construction Impacts & Sustainable Design
- Community Impacts
- Induced Socioeconomic Impacts

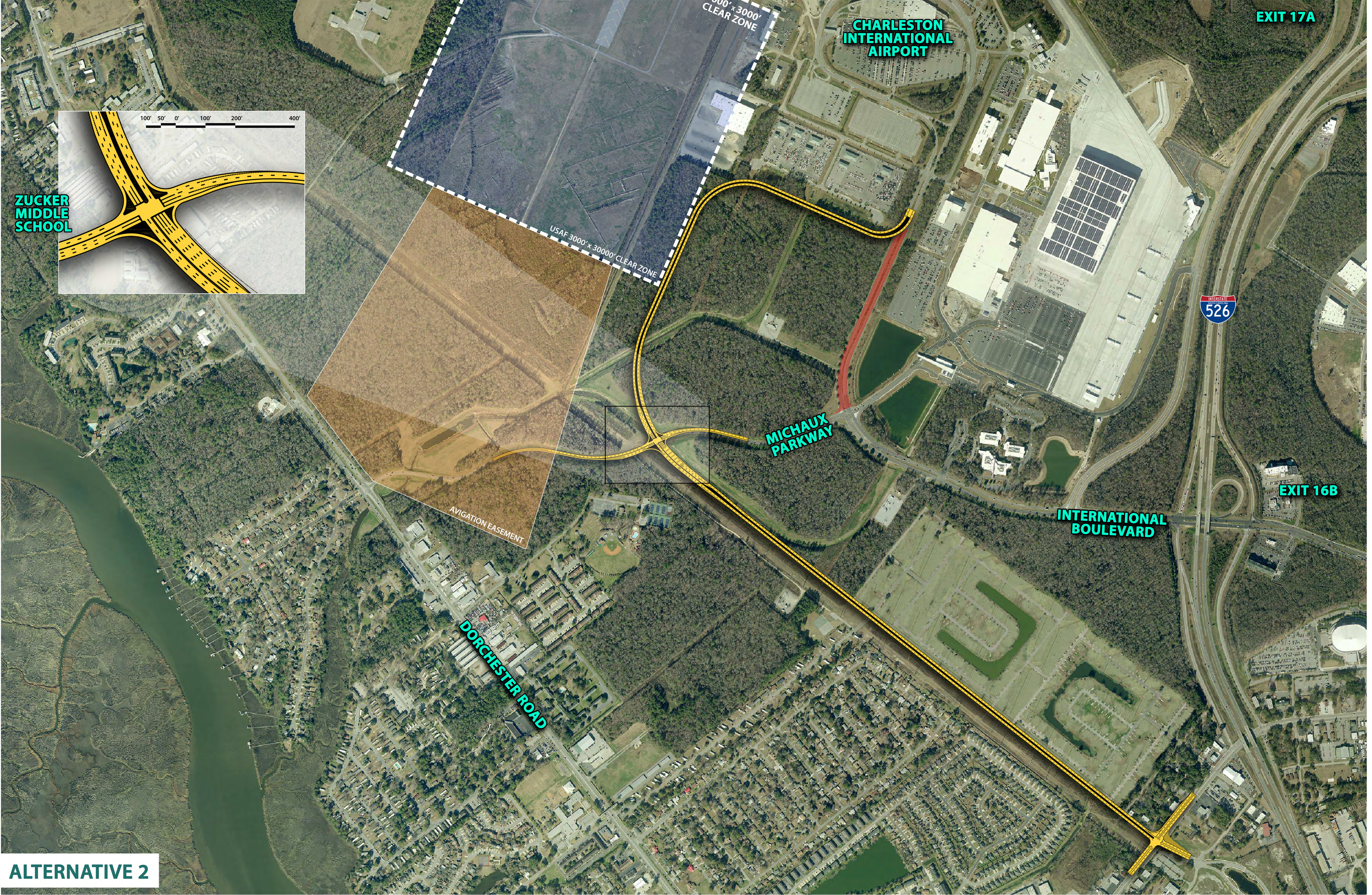
- Energy Supplies
- Floodplains
- Hazardous Materials
- Solid Waste
- Water Quality
- Compatible Land Use
- Recreational Resources
- Environmental Justice
- Historic, Architectural, Archeological or Cultural Property
- Light Emissions & Visual Effects
- Noise



ALTERNATIVE 1

**AIRPORT CONNECTOR
POTENTIAL ROAD ALIGNMENTS**

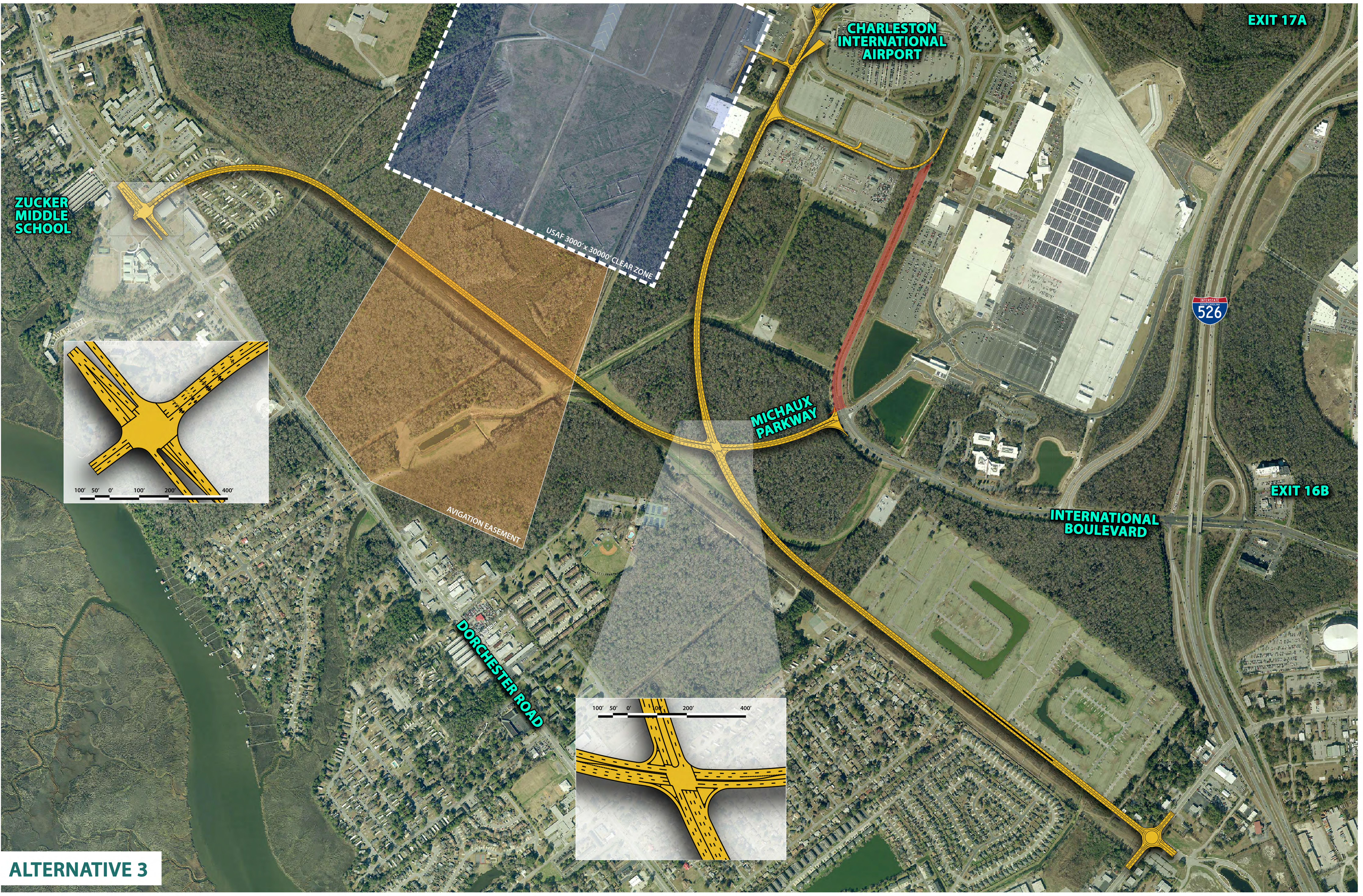




ALTERNATIVE 2

AIRPORT CONNECTOR
POTENTIAL ROAD ALIGNMENTS





ALTERNATIVE 3

**AIRPORT CONNECTOR
POTENTIAL ROAD ALIGNMENTS**



EARTHEN BERM BUFFER
STREET LEVEL VIEW



BIRDS' EYE PERSPECTIVE



NEIGHBORHOOD VIEW



AIRPORT CONNECTOR
BUFFERING OPTIONS

LANDSCAPE BUFFER

STREET LEVEL VIEW



BIRDS' EYE PERSPECTIVE



NEIGHBORHOOD VIEW



AIRPORT CONNECTOR

BUFFERING OPTIONS