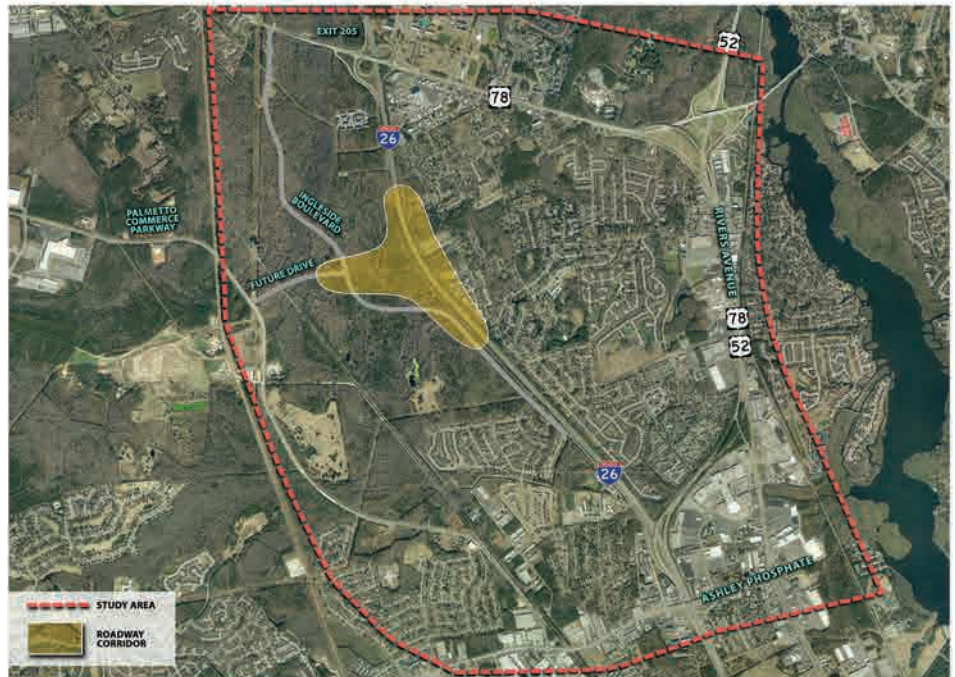




PALMETTO COMMERCE INTERCHANGE PROJECT



6:00 - 6:30 PM
RELAX or REVIEW



Grab a seat for the presentation or visit the exhibits stationed around the room - it's your choice!

6:30 - 6:45 PM
LISTEN



Hear about the project design alternatives and next steps from a project team representative.

6:45 - 8:00 PM
COMMENT



Continue the conversation with project team representatives stationed at each of the exhibits around the room. Please share your thoughts and suggestions on a provided comment card and submit using one of the options stated to the right.

The Palmetto Commerce Interchange Project (PCI) was initiated by Charleston County Government, in coordination with the South Carolina Department of Transportation (SCDOT) and the Federal Highway Administration (FHWA), to improve existing and future traffic congestion conditions in a rapidly developing area of Charleston County. PCI is bounded by I-26 to the east, University Boulevard (US Highway 78) and Ladson Road to the north, Palmetto Commerce Parkway and adjacent land to the west, and Ashley Phosphate Road to the south. The project also aims to improve access and mobility within existing and planned commercial, industrial, and residential areas.

WAYS TO SUBMIT YOUR COMMENT CARD

Submittal deadline is September 17, 2014.

#1 FILL IT OUT TONIGHT

Fill out your form and drop it in the Comment Card box before you leave.

#2 TAKE HOME & MAIL IN LATER

Mail to: Mr. Richard Turner, PE, PCI Project Manager, Charleston County Government, Lonnie Hamilton, III Public Services Building, 4045 Bridge View Drive, North Charleston, SC 29405 or

E-mail to: PCIinfo@charlestoncounty.org

#3 FILL IT OUT ONLINE

Complete the online form at PCI.charlestoncounty.org.