



CHARLESTON  
COUNTY  
SOUTH CAROLINA

# Palmetto Commerce Interchange

Public Information Meeting

September 3, 2014

## PROGRAM HISTORY

2007



...2013

Palmetto Commerce Parkway Phases I and II are constructed

Significant economic development occurs in the area and more development is planned

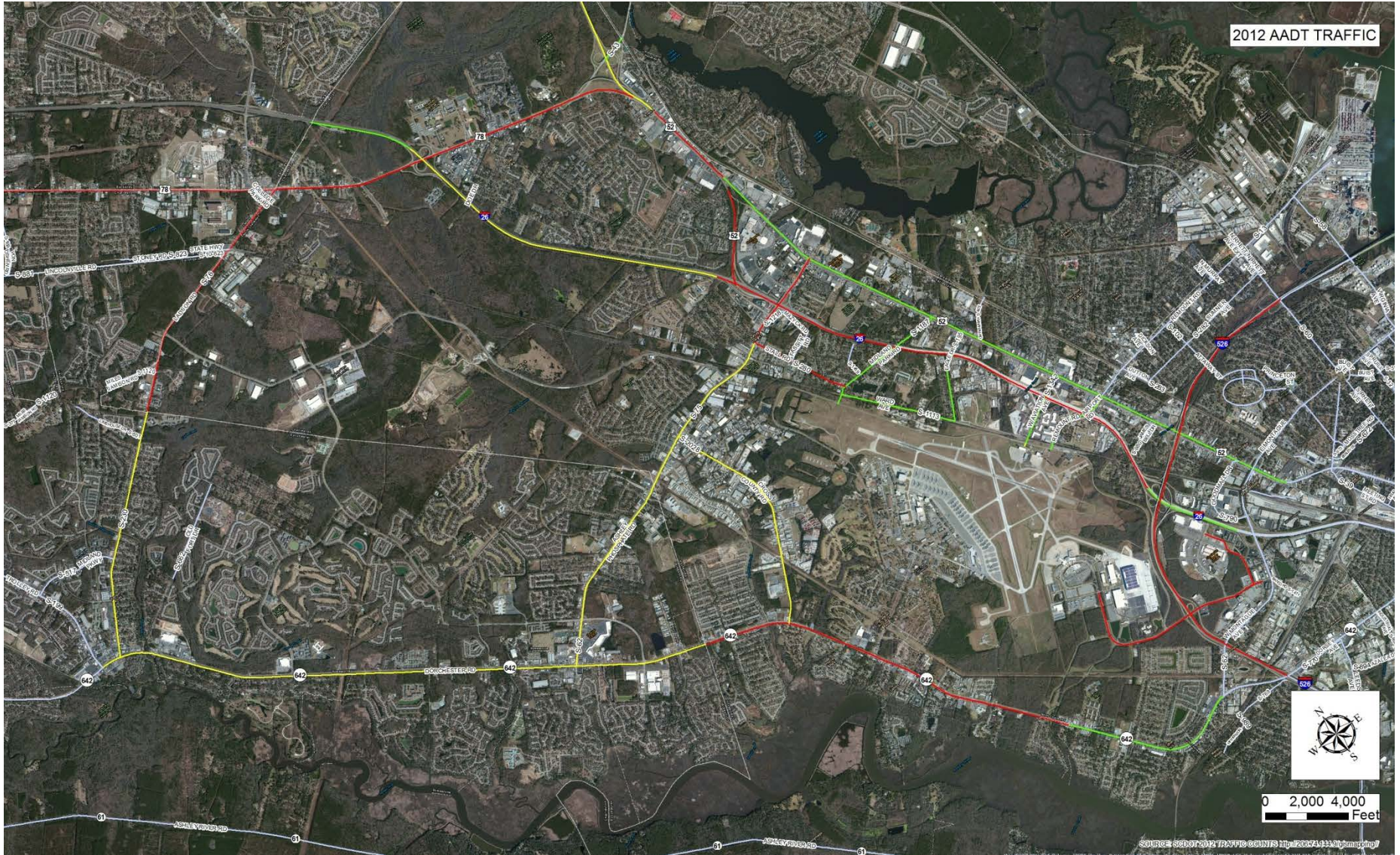
Traffic congestion increases on Ladson Road, US 78, and Ashley Phosphate Road corridors

Charleston County approves Palmetto Commerce Interchange project to help relieve traffic congestion

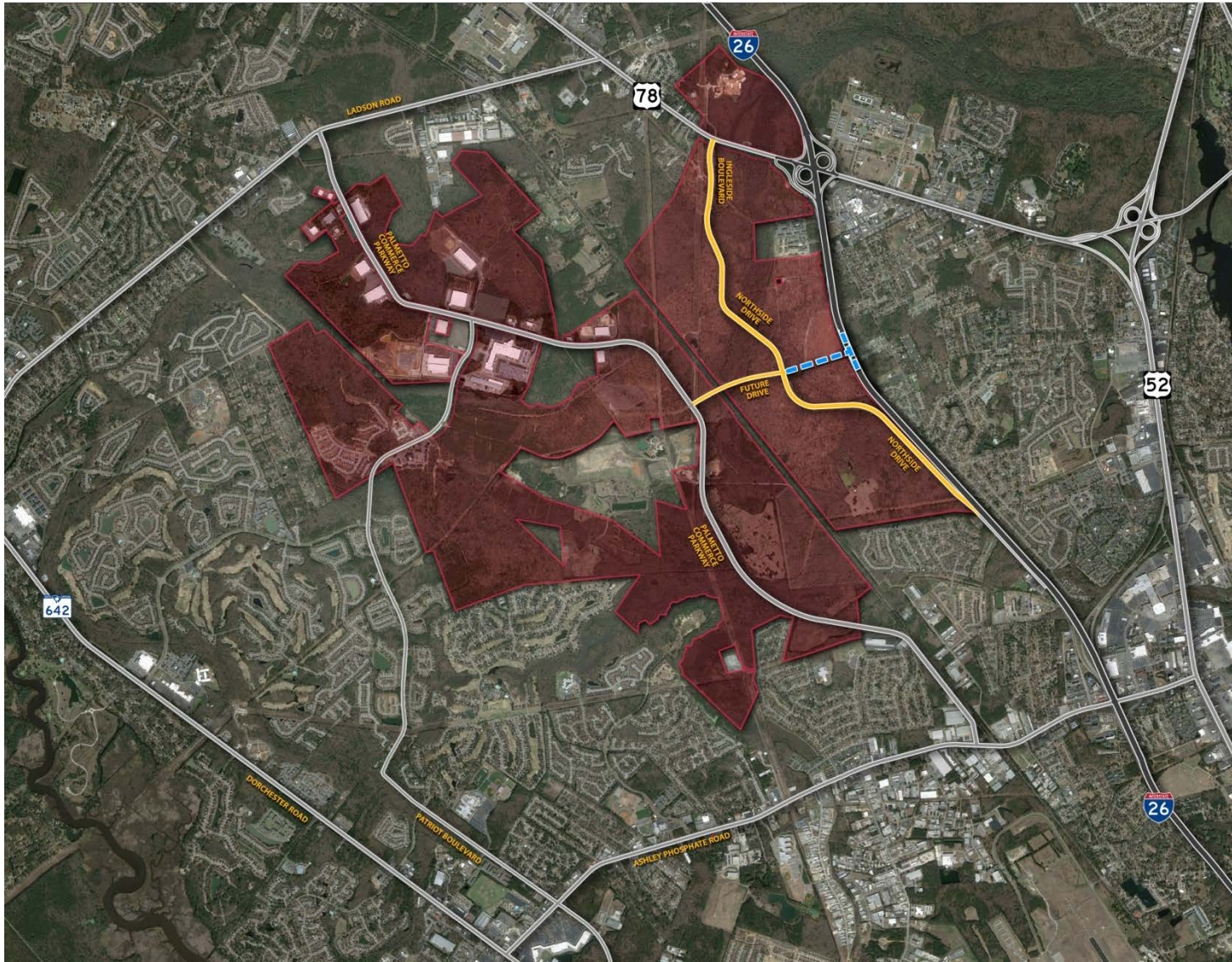
# STUDY AREA



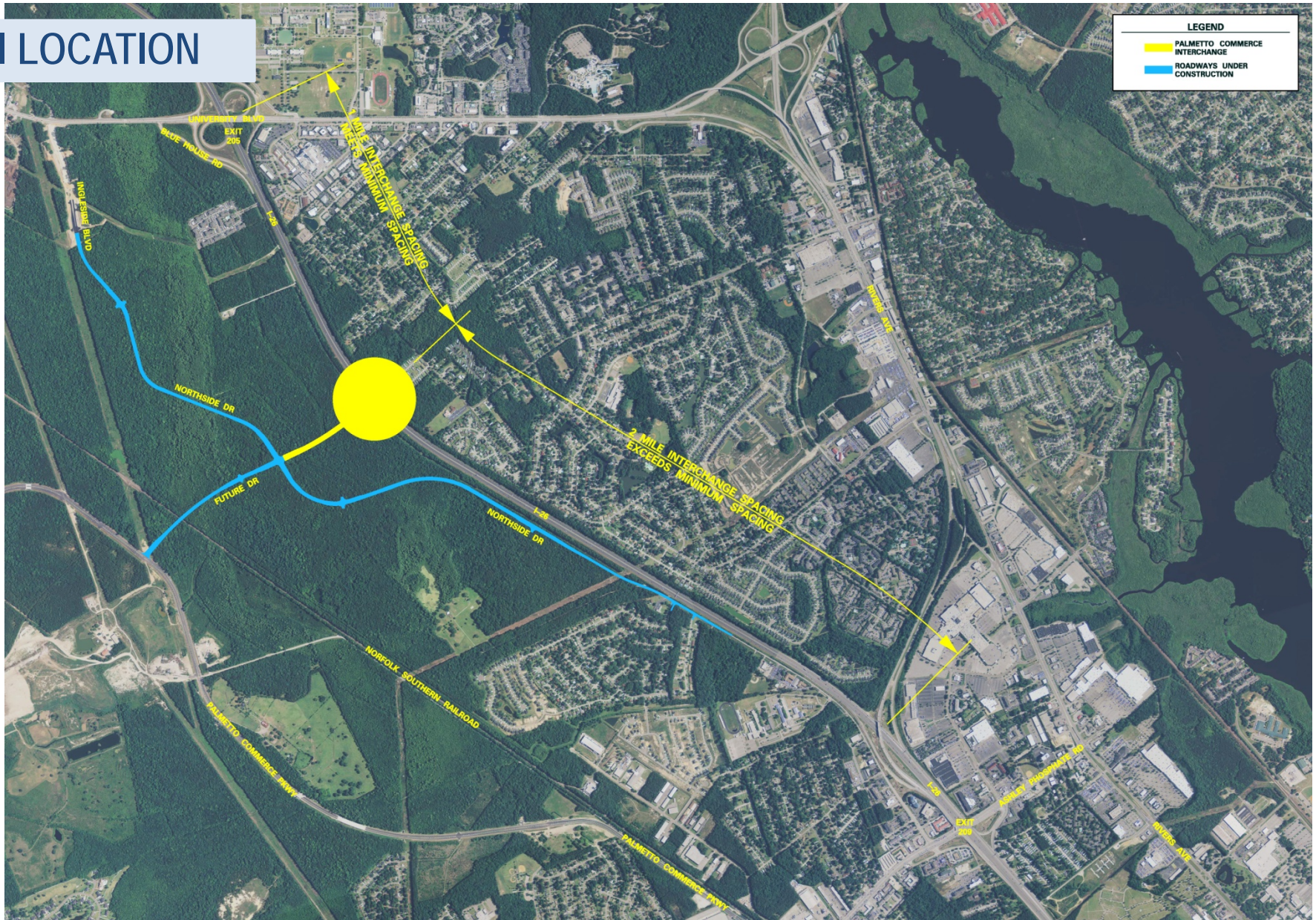
# EXISTING TRAFFIC CONDITIONS



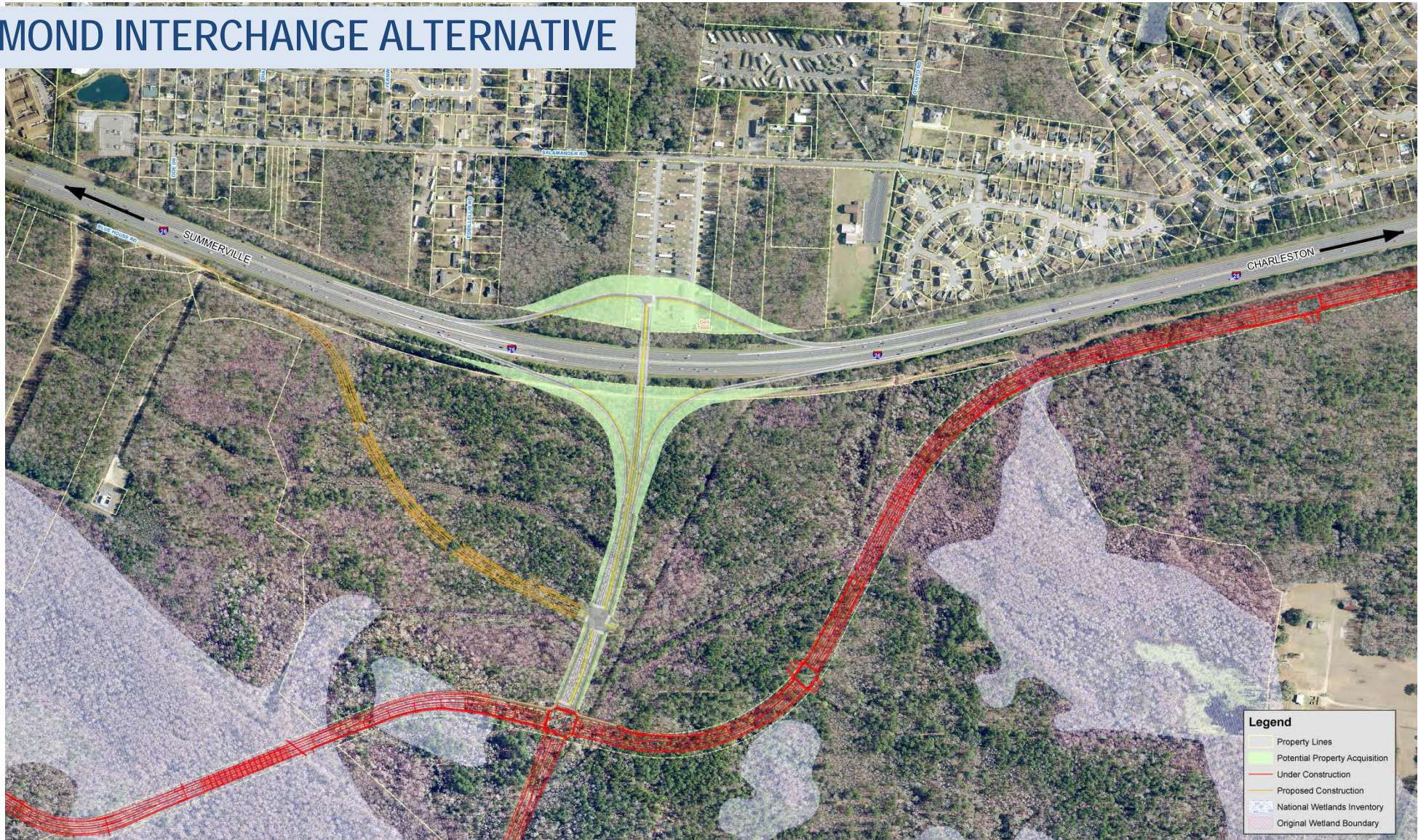
# ECONOMIC DEVELOPMENT



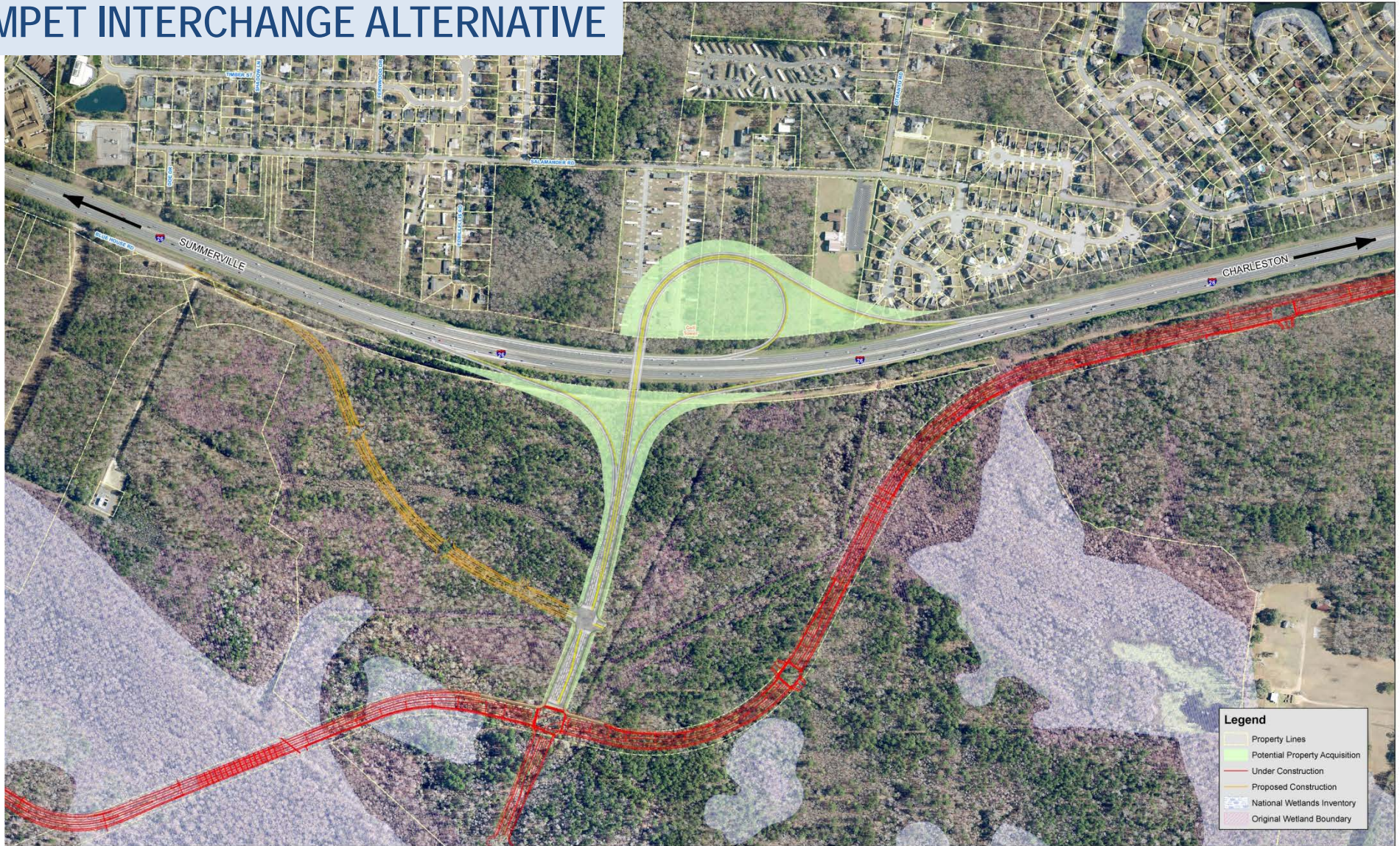
# I-26/PCI LOCATION



# DIAMOND INTERCHANGE ALTERNATIVE

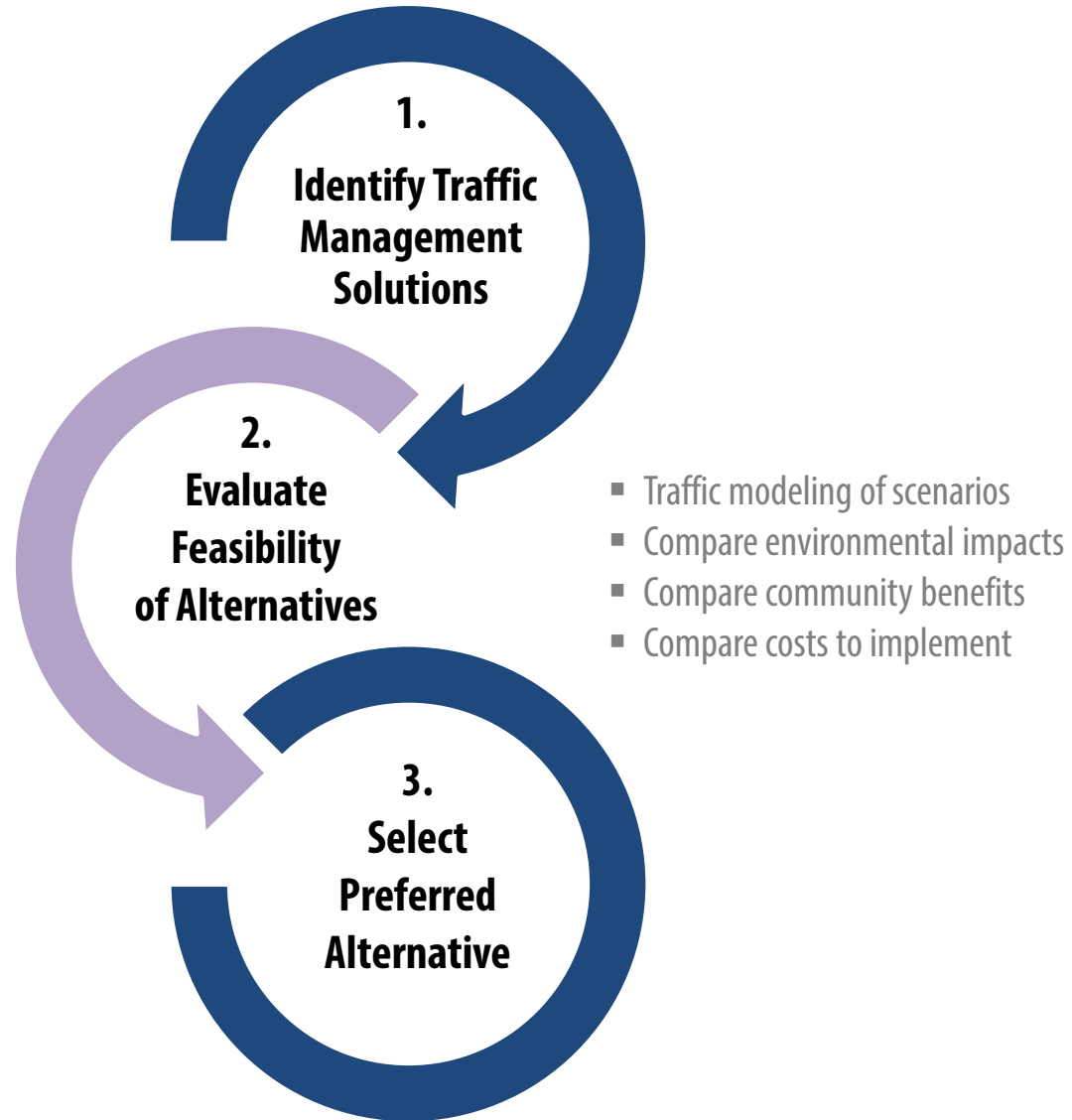


# TRUMPET INTERCHANGE ALTERNATIVE





# PLANNING PROCESS



# TIMELINE & PUBLIC INVOLVEMENT

Activity	Start	Finish	2013	2014				2015				2016				2017				2018				
			Q4	Q1	Q2	Q3	Q4	Q1	Q2	Q3	Q4	Q1	Q2	Q3	Q4	Q1	Q2	Q3	Q4	Q1	Q2	Q3	Q4	
Preliminary Plans	29-Oct-13	26-Dec-14		█																				
Utility Coordination	6-Jan-14	9-Sep-16		█				█																
ROW Plans	29-Dec-14	21-Aug-15						█																
ROW / Permits	24-Aug-15	26-Sep-16								█														
Final Construction Plans	24-Aug-15	26-Aug-16								█														
Advertise for Bid	29-Aug-16	18-Nov-16																						
Construction	18-Nov-16	18-Nov-18																						



← - - - - - Public Involvement Opportunities - - - - - →



# YOUR INPUT MATTERS!

## Ways to Submit your Comment Card:

1.

Fill it Out Tonight

2.

Take Home  
& Mail-in Later

3.

Fill it out Online  
[PCI.charlestoncounty.org](http://PCI.charlestoncounty.org)

**DEADLINE TO SUBMIT COMMENTS: SEPTEMBER 17**



## Thank You.

Please visit the Palmetto Commerce Interchange web page for project details and updates:

[PCI.charlestoncounty.org](https://pci.charlestoncounty.org)