

**AN ORDINANCE
APPROVING AND AUTHORIZING THE GRANT OF AN EASEMENT TO
THE MEDICAL UNIVERSITY HOSPITAL AUTHORITY ON A PORTION
OF COUNTY PROPERTY, LOCATED AT 334 CALHOUN STREET,
CHARLESTON, SOUTH CAROLINA, IDENTIFIED AS TAX MAP
PARCEL NUMBER 460-14-00-019**

WHEREAS, the Medical University Hospital Authority (“MUHA”) has requested the grant of an easement thirty (30) feet by ninety-nine (99) feet across a portion of Charleston County’s real property identified by tax map parcel identification number 460-14-00-019, located at 334 Calhoun Street, in Charleston, South Carolina (“Property”), hereby attached as Exhibit A and incorporated herein by reference; and

WHEREAS, MUHA is currently in the process of constructing the Shawn Jenkins Children’s Hospital and Women’s Pavilion (the “Hospital”), to be located at 326 Calhoun Street, Charleston, South Carolina, as more fully shown and depicted on Exhibit A; and

WHEREAS, MUHA requires this easement in order to provide access to a parking garage for its patients, employees, and other visitors to the Hospital, and MUHA desires to install and construct an elevated pedestrian walkway bridge over and across the Property between the parking garage and the Hospital (the “Bridge”), the area of which is shown and enclosed by the markers A, B, C, D, E, and H on the Drawing (the “Bridge Easement Area”); and

WHEREAS, Charleston County Council finds that granting the easement is an appropriate public use for this property; and

WHEREAS, Charleston County Council also finds that the easement will be a benefit to the County and other businesses in the area, and it consents to MUHA having an easement across the property owned by the County; and

NOW, THEREFORE, BE IT ORDAINED by County Council of Charleston County, South Carolina, in meeting duly assembled finds as follows:

SECTION I. FINDINGS INCORPORATED

The above recitals and findings are incorporated herein by reference and made a part of this Ordinance.

SECTION II. EASEMENT GRANTED; AUTHORITY TO EXECUTE DOCUMENTS

A. Charleston County Council grants an easement thirty (30) feet by ninety-nine (99) feet across a portion of Charleston County’s real property identified by parcel identification number 460-14-00-019, located at 334 Calhoun Street, in Charleston,

South Carolina, to provide access to a parking garage for MUHA's patients, employees, and other visitors to the Hospital. MUHA will be responsible for any damages to County property occurring during its use of the easement, or anyone on its behalf to include its invitees. MUHA will pay for all costs of constructing, maintaining, and repairing the easement, as needed. The location of the easement is shown on the attached drawing, which is incorporated by reference as Exhibit A.

B. The Chairman of Council is authorized to execute and deliver all documents and instruments necessary for the grant of this easement.

SECTION III. SEVERABILITY

If, for any reason, any part of this Ordinance is invalidated by a court of competent jurisdiction, the remaining portions of this Ordinance shall remain in full force and effect.

SECTION IV. EFFECTIVE DATE

This Ordinance shall become effective immediately upon approval following third reading.

ADOPTED and APPROVED in meeting duly assembled this ____ day of _____, 2016.

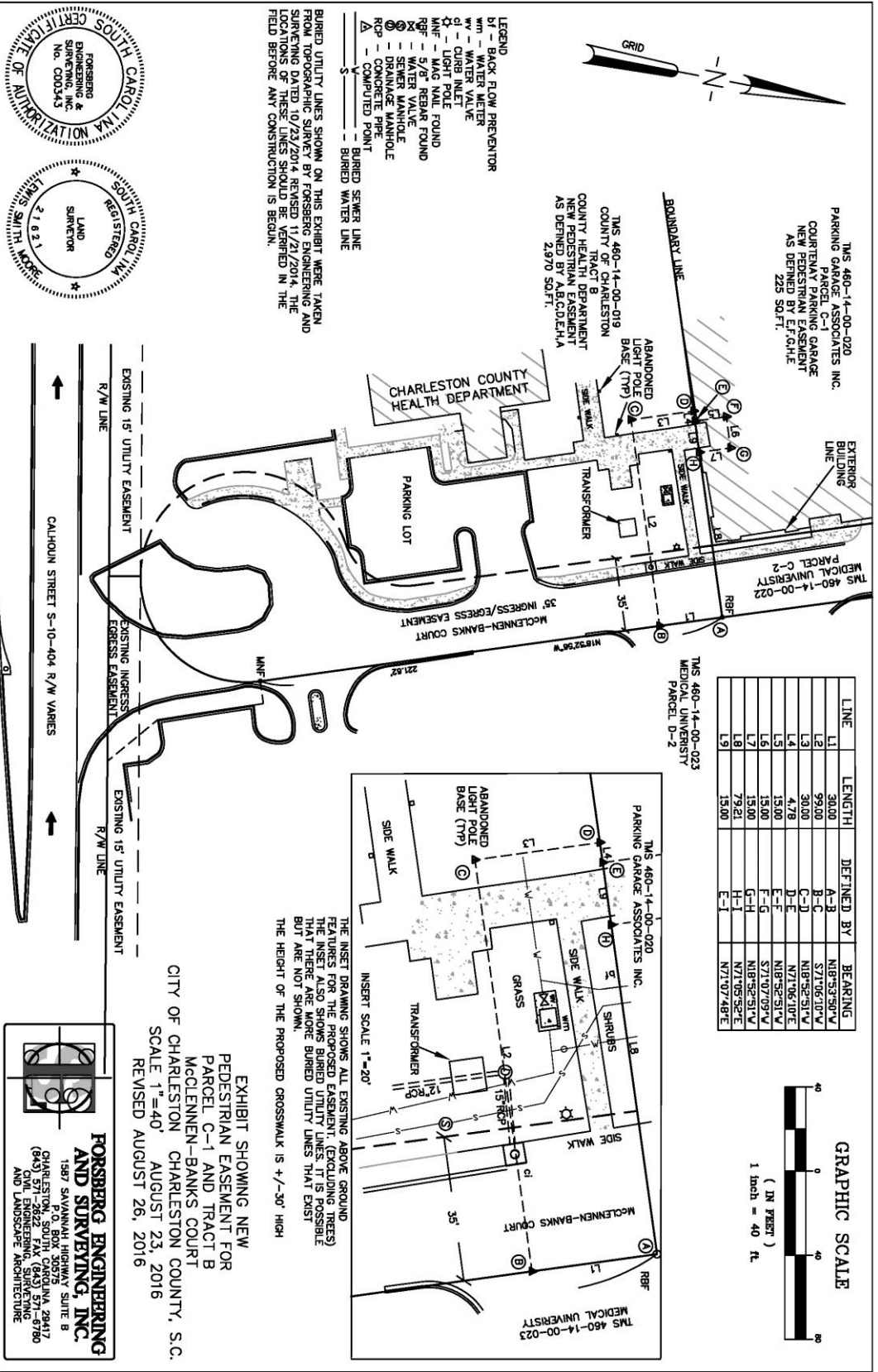
CHARLESTON COUNTY COUNCIL

By: _____
J. Elliott Summey
Chairman of County Council

ATTEST:

By: _____
Beverly T. Craven
Clerk to County Council

First Reading: August 23, 2016
Second Reading: September 6, 2016
Third Reading: September 20, 2016



CAROLINA PROFESSIONAL ENGINEERING & SURVEYING, INC. No. C000343

SOUTH CAROLINA REGISTERED LAND SURVEYOR 21621

EXISTING 15' UTILITY EASEMENT

EXISTING INGRESS/EGRESS EASEMENT

EXISTING 15' UTILITY EASEMENT

EXISTING INGRESS/EGRESS EASEMENT

EXISTING 15' UTILITY EASEMENT

EXISTING INGRESS/EGRESS EASEMENT

EXISTING 15' UTILITY EASEMENT

EXISTING INGRESS/EGRESS EASEMENT

EXISTING 15' UTILITY EASEMENT

EXISTING INGRESS/EGRESS EASEMENT

EXISTING 15' UTILITY EASEMENT

EXISTING INGRESS/EGRESS EASEMENT

EXISTING 15' UTILITY EASEMENT

EXISTING INGRESS/EGRESS EASEMENT

EXISTING 15' UTILITY EASEMENT

EXISTING INGRESS/EGRESS EASEMENT

EXISTING 15' UTILITY EASEMENT

EXISTING INGRESS/EGRESS EASEMENT

EXISTING 15' UTILITY EASEMENT

EXISTING INGRESS/EGRESS EASEMENT

EXISTING 15' UTILITY EASEMENT

EXISTING INGRESS/EGRESS EASEMENT

EXISTING 15' UTILITY EASEMENT

EXISTING INGRESS/EGRESS EASEMENT

EXISTING 15' UTILITY EASEMENT

EXISTING INGRESS/EGRESS EASEMENT

EXISTING 15' UTILITY EASEMENT

EXISTING INGRESS/EGRESS EASEMENT

EXISTING 15' UTILITY EASEMENT

EXISTING INGRESS/EGRESS EASEMENT

EXISTING 15' UTILITY EASEMENT

EXISTING INGRESS/EGRESS EASEMENT

EXISTING 15' UTILITY EASEMENT

EXISTING INGRESS/EGRESS EASEMENT

EXISTING 15' UTILITY EASEMENT

EXISTING INGRESS/EGRESS EASEMENT

EXISTING 15' UTILITY EASEMENT

EXISTING INGRESS/EGRESS EASEMENT

EXISTING 15' UTILITY EASEMENT

EXISTING INGRESS/EGRESS EASEMENT

EXISTING 15' UTILITY EASEMENT

EXISTING INGRESS/EGRESS EASEMENT

EXISTING 15' UTILITY EASEMENT

EXISTING INGRESS/EGRESS EASEMENT

EXISTING 15' UTILITY EASEMENT

EXISTING INGRESS/EGRESS EASEMENT

EXISTING 15' UTILITY EASEMENT

EXISTING INGRESS/EGRESS EASEMENT

EXISTING 15' UTILITY EASEMENT

EXISTING INGRESS/EGRESS EASEMENT

EXISTING 15' UTILITY EASEMENT

EXISTING INGRESS/EGRESS EASEMENT

EXISTING 15' UTILITY EASEMENT

EXISTING INGRESS/EGRESS EASEMENT

EXISTING 15' UTILITY EASEMENT

EXISTING INGRESS/EGRESS EASEMENT

EXISTING 15' UTILITY EASEMENT

EXISTING INGRESS/EGRESS EASEMENT

EXISTING 15' UTILITY EASEMENT

EXISTING INGRESS/EGRESS EASEMENT

EXISTING 15' UTILITY EASEMENT

EXISTING INGRESS/EGRESS EASEMENT

EXISTING 15' UTILITY EASEMENT

EXISTING INGRESS/EGRESS EASEMENT

EXISTING 15' UTILITY EASEMENT

EXISTING INGRESS/EGRESS EASEMENT

EXISTING 15' UTILITY EASEMENT

EXISTING INGRESS/EGRESS EASEMENT

EXISTING 15' UTILITY EASEMENT

EXISTING INGRESS/EGRESS EASEMENT

EXISTING 15' UTILITY EASEMENT

EXISTING INGRESS/EGRESS EASEMENT

EXISTING 15' UTILITY EASEMENT

EXISTING INGRESS/EGRESS EASEMENT

EXISTING 15' UTILITY EASEMENT

EXISTING INGRESS/EGRESS EASEMENT

EXISTING 15' UTILITY EASEMENT

EXISTING INGRESS/EGRESS EASEMENT

EXISTING 15' UTILITY EASEMENT

EXISTING INGRESS/EGRESS EASEMENT

EXISTING 15' UTILITY EASEMENT

EXISTING INGRESS/EGRESS EASEMENT

EXISTING 15' UTILITY EASEMENT

EXISTING INGRESS/EGRESS EASEMENT

EXISTING 15' UTILITY EASEMENT

EXISTING INGRESS/EGRESS EASEMENT

EXISTING 15' UTILITY EASEMENT

EXISTING INGRESS/EGRESS EASEMENT

EXISTING 15' UTILITY EASEMENT

EXISTING INGRESS/EGRESS EASEMENT

EXISTING 15' UTILITY EASEMENT

EXISTING INGRESS/EGRESS EASEMENT

EXISTING 15' UTILITY EASEMENT

EXISTING INGRESS/EGRESS EASEMENT

EXISTING 15' UTILITY EASEMENT

EXISTING INGRESS/EGRESS EASEMENT

EXISTING 15' UTILITY EASEMENT

EXISTING INGRESS/EGRESS EASEMENT

EXISTING 15' UTILITY EASEMENT

EXISTING INGRESS/EGRESS EASEMENT

EXISTING 15' UTILITY EASEMENT

EXISTING INGRESS/EGRESS EASEMENT

EXISTING 15' UTILITY EASEMENT

EXISTING INGRESS/EGRESS EASEMENT

EXISTING 15' UTILITY EASEMENT

EXISTING INGRESS/EGRESS EASEMENT

EXISTING 15' UTILITY EASEMENT

EXISTING INGRESS/EGRESS EASEMENT

EXISTING 15' UTILITY EASEMENT

EXISTING INGRESS/EGRESS EASEMENT

EXISTING 15' UTILITY EASEMENT

EXISTING INGRESS/EGRESS EASEMENT

EXISTING 15' UTILITY EASEMENT

EXISTING INGRESS/EGRESS EASEMENT

EXISTING 15' UTILITY EASEMENT

EXISTING INGRESS/EGRESS EASEMENT

EXISTING 15' UTILITY EASEMENT

EXISTING INGRESS/EGRESS EASEMENT

EXISTING 15' UTILITY EASEMENT

EXISTING INGRESS/EGRESS EASEMENT

EXISTING 15' UTILITY EASEMENT